

Simplify

Contents

3

Introduction 4

Projects 13

Collections 23

Woods 25

Stones 39

Abstracts 49

Specifications 73

The Amtico Story 85

All of Amtico's outstanding design focused into a hard-working, streamlined collection, Spacia is our answer to the many complex needs of your commercial projects.

Amtico makes it possible.

Creative expression, straightforward solution

A focused collection featuring versatile sizes and laying patterns, Spacia is quick to specify and install.

Performs at large scales to short lead times

Spacia's 104 designs are in stock* and ready to meet your deadline.

UK designed and made to world-leading standards

Enjoy the continuity of care and technical excellence of an enduring British brand.



Samples and support

We offer expert support worldwide with a free online global supply service for samples.

Full size samples are available from your Area Sales Manager.

Choose Spacia:

29

New products

UK

Designed and
manufactured

0.55 mm

Wear layer

10

Year Warranty

104

Designs for
greater choice

6

New laying
patterns



Beautiful Enduring Sustainable. This is Amtico LVT.

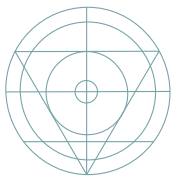
What is LVT?

Luxury Vinyl Tile flooring is made from PVC or Polyvinyl Chloride – a strong, long-lasting plastic polymer. One of the first manufacturers, Amtico has been a pioneer of Luxury Vinyl Tile flooring for more than 50 years, with a reputation built on collaborative creativity, enduring performance and unrivalled expertise.

Why choose LVT?

In short, LVT offers all of the design possibilities of stone, ceramics and wood floors, but it's easier to work with, specify, lay and maintain.

Spacia LVT also works with underfloor heating, can be made with Amtico Acoustic backing, and integrates flawlessly with other materials and designs.



EXPERT
KNOWLEDGE

The unrivalled knowledge, expert support and bespoke service you'd expect from a market leader with over 50 years experience.

Specify Amtico LVT for:



Lasting appearance



Low maintenance



Easy cleaning

Amtico LVT is highly resistant to:



Heavy traffic



Dents



Marks and scuffs

Multiple Performance System

Industry-leading Sustainable Construction.

How it works

Spacia, like all of Amtico's LVT products, uses the industry's most technically advanced layering system. Our world-leading Multiple Performance System gives underfoot comfort and high resistance to wear, resulting in unrivalled durability and a long lasting appearance.

Sustainable manufacture

Manufactured with consideration for both the built and natural environment, Spacia is certified for use in education, healthcare, homes and offices – meeting VOC requirements for wellbeing and air quality across Europe and the US.

Materials created during the production process are fully recycled, with some going back into our products and the remainder used by external businesses to make new products.

For more information on specifications and sustainability see pages 74 and 92.

Amtico Spacia LVT is:



Phthalate free



A low emission product



BREEAM rated



Made with 30% recycled content



100% recyclable



10YR COMMERCIAL WARRANTY

18dB

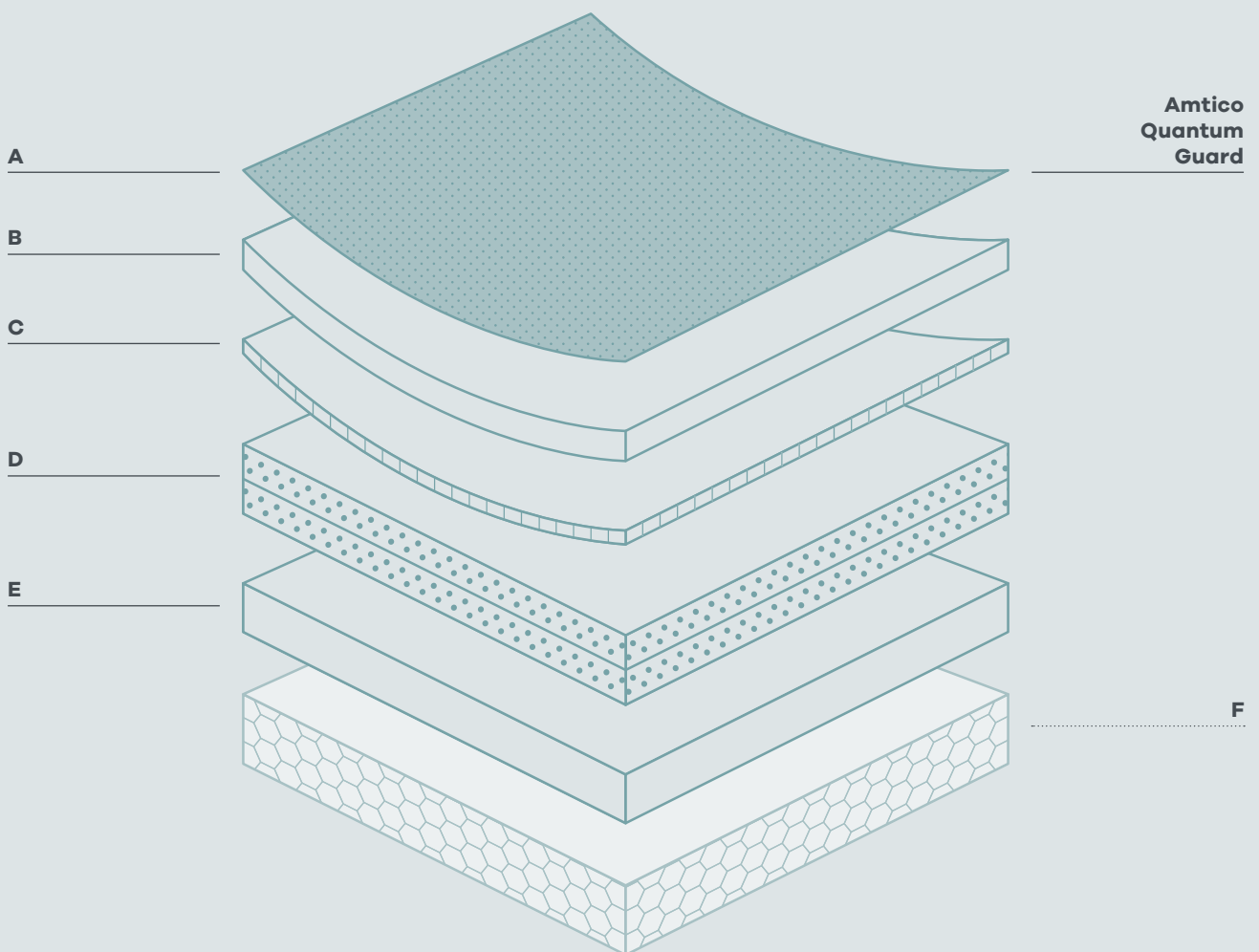
Available with Amtico Acoustic which dampens noise by up to 18 dB. More on page 11.

Unrivalled Performance and Durability

The crowning feature of our Multiple Performance System is our Quantum Guard urethane layer. Amtico's Quantum Guard is the most durable urethane on the market. The low-gloss finish also enhances the realism of our natural-looking products.

Spacia Quantum Guard:

- Eliminates the need for polish
- Enhances durability
- Is easy to clean
- Improves appearance retention
- Offers high-slip retardance



A. Quantum Guard urethane coating

Amtico's superior mark and scuff resistance layer.

B. High-density 0.55 mm wear layer

Withstands intense use and resists indentation, retaining clarity.

C. Print layer

The carefully crafted Wood, Stone and Abstract designs.

D. Dual core layer

Comprising 30% recycled content.

E. Backing

Provides a strong foundation and guarantees high performance. Created using 100% recyclable materials.

F. Optional Acoustic backing

Visco elastic polymer in a closed cell foam structure offering sound reduction of up to 18 dB with a residual indentation of <0.20 mm.

Tiles and planks

Our planks and tiles provide one simple solution to many complex demands. This focused collection makes Spacia intuitive to use, quick to specify and easy to install.

Our tile sizes:

Wood

4" x 36" / 101.6 x 914.4 mm



7.25" x 48" / 184.2 x 1219.2 mm



Stone

12" x 12" / 304.8 x 304.8 mm



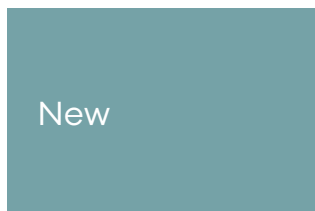
12" x 18" / 304.8 x 457.2 mm



18" x 18" / 457.2 x 457.2 mm



24" x 36" / 609.6 x 914.4 mm



Only available in Concrete

Abstract

4" x 36" / 101.6 x 914.4 mm



7.25" x 48" / 184.2 x 1219.2 mm



9" x 36" / 228.6 x 914.4 mm



Only available in Stellar and Skye

12" x 18" / 304.8 x 457.2 mm



18" x 18" / 457.2 x 457.2 mm



Amtico Acoustic can be specified as a backing option with the Spacia Collection. The specially developed closed-cell foam structure dampens noise by up to 18 dB, whilst also helping to reduce fatigue in high traffic areas.



ACOUSTIC

18 dB

Amtico Acoustic enhances the acoustic properties of LVT by reducing sound transmission by up to 18 dB.



“The Crown”

**Office
Acoustic
Performance
Easy cleaning
BREEAM A rated**

Location:
France

Products:
Warm Cherry and Pale Ash

Laying pattern:
Stripwood

Photography:
Emmanuel Parendet

“Amtico Acoustic flooring was chosen for both its aesthetics and sound transmission resistance, whilst also providing outstanding comfort.”

Fabien Clair
President
Clair Aménagement SAS

**These are
our Projects**



For a hotel at the very top of its industry, guest experience is paramount. At the "KRONE" Hotel, achieving an exceptional flooring solution meant keeping with the luxury interior design aesthetic, but also ensuring high levels of comfort and wellbeing.

Selecting Spacia's Rustic Limed Wood with Acoustic backing in a Stripwood laying pattern maintained the classic feel of the hotel, while creating a quieter, relaxing stay for guests.

Hospitality

Hotel

Comfort underfoot

High performance

Low fatigue

Sound reduction

Location:

Germany

Products:

Rustic Limed Wood with Amtico Acoustic backing

Laying pattern:

Stripwood

Photography:

Tobias Burger, Studio 27

18 dB

sound transmission reduction



"Our new, high-quality deluxe and exquisite rooms are spread over three floors. We did not think a floor could be so quiet but the high-impact sound insulation of up to 18 dB has convinced us. The ease of care, the natural appearance and the acoustic properties were essential decision-making criteria. Our guests are just as enthusiastic as we are."

Helmut Schafroth
Owner and Managing Director
Hotel-Restaurant "KRONE"



410 m²

of enhanced acoustic LVT floors



Friska restaurants aim to create a welcoming atmosphere. The combination of two designs – Weathered Oak and Sun Bleached Oak – in the classic Stripwood laying pattern was integral to creating the light, airy and contemporary feel. Spacia also complemented the company’s commitment to sustainability and ethical sourcing, which are front of mind for the restaurants’ founders when designing new premises.

Hospitality
High traffic
Easy cleaning
BREEAM A+ rated

Location:
United Kingdom

Products:
Weathered Oak, Sun Bleached Oak

Laying pattern:
Stripwood

Photography:
Kenton Simons, Story Design

A+

All products meet BREEAM and sector sustainability standards



“A stripwood pattern was employed, with the random nature of wood effect helping to make the overall look and feel convincing. Plus, from a sustainable perspective, it’s made in Coventry, so the transportation requirements were far less than other products.”

Griff Holland
Founder, Friska

2

coordinated designs

FRISKA

FEEL GOOD FOOD



A healthcare environment is only as good as its level of hygiene. For Uniklinik Köln, as with every hospital, the ideal floor was one that could be easily cleaned, withstand heavy traffic and usage, and contribute to a sense of wellbeing.

Healthcare
R10 slip-retardance
High traffic
Easy cleaning
Durability
Functionality

5300 m²

resilient flooring for healthcare

Location:
Germany

Products:
Dusky Walnut

Laying pattern:
Stripwood

Photography:
Jürgen Schmidt, Köln

"After working with Amtico on previous projects, I already knew of the outstanding product quality and diversity that it has to offer. Therefore, there was no doubt that Amtico would be the right choice for this project."

Stefan Schugt
Dipl.-Ing. (FH)
Project Manager, medfacilities GmbH

10

year warranty for heavy commercial use





Södra Dalarnas Sparbank is the oldest bank in Hedemora, located in an old stone building with residential space above. The management faced the dual challenge of finding a floor that could introduce something new and modern – one that wouldn't jar with the character of the building – and deal with the snow, rain and dirt that customers would bring in during the winter.

2

contrasting compatible floor designs

Office & Public space Hard wearing Integrated 3 designs High performance

Location:
Sweden

Products:
Nordic Oak, Silk Weave and Amtico Entryway Bypass Black

Laying pattern:
Stripwood and Broken Bond



"I was impressed by the sheer possibilities of Spacia, and of course its practicality and performance. We wouldn't have found such a perfect solution without Amtico's expert support."

Eija Söderström Ryman
Interior Designer



All products meet BREEAM and sector sustainability standards



**This is our
Collection**





These are our Woods

Introducing

Fresh Original Colourful Rustic Grains



Scorched Timber – SS5W3024



Drift Pine – SS5W3027



The realistic colour variations found in Rustic Grains ensure they work hard across a multitude of commercial projects, hiding the signs of high traffic. Found in Spacia's Cool, Neutral and Dark Wood palettes, they work beautifully alone or in combinations set out in our specially designed flooring patterns.



For more information on laying patterns, see pages 64-66 or amtico.com



Estuary Pine – SS5W3028

"Capturing the colours, textures and grains found in naturally weathered wood – Rustic Grains give designers a broader palette to experiment with."

Kelly Alders
Senior Designer



6

new colours, available in two plank sizes:

4" x 36" / 101.6 x 914.4 mm



7.25" x 48" / 184.2 x 1219.2 mm



Merchant Wood – SS5W3026



Coastal Pine – SS5W3029



Blackened Spa Wood – SS5W3025





Sash Oak – Herringbone



White Oak

SS5W2548



White Ash

SS5W2540



Weathered Oak

SS5W2524



Nordic Oak

SS5W2550



Sash Oak

SS5W3032



Credenza Oak

SS5W3035



Bruges Oak

SS5W3034



Smoked Timber

SS5W2652



Drift Pine

SS5W3027



Coastal Pine

SS5W3029





Worn Ash

SS5W2539



Bleached Elm

SS5W2516



Featured Oak

SS5W2533



Hampton Oak

SS5W3031



Dry Cedar

SS5W2535



Sun Bleached Oak

SS5W2531



Noble Oak

SS5W3030



Smoked Cedar

SS5W2536



Rustic Limed Wood

SS5W2650



Dusky Walnut

SS5W2542





Pale Maple

SS5W2501



Warm Maple

SS5W2502



Eden Oak

SS5W1010



Limed Wood Natural

SS5W2549



White Maple

SS5W2654



Canopy Oak

SS5W1020



Pale Ash

SS5W2518



Honey Oak

SS5W2504



New England Oak

SS5W2527



Traditional Oak

SS5W2514



Classic Cherry – Stripwood



Sherwood Oak

SS5W2532



Smoothbark Hickory

SS5W2545



Royal Oak

SS5W2530



Warm Cherry

SS5W2506



Exotic Walnut

SS5W2541



Warm Walnut

SS5W2543



Black Walnut

SS5W2534



Classic Cherry

SS5W2510





Estuary Pine

SS5W3028



Haven Oak

SS5W3033



Rustic Barn Wood

SS5W2513



Merchant Wood

SS5W3026



Scorched Timber

SS5W3024



Blackened Spa Wood

SS5W3025



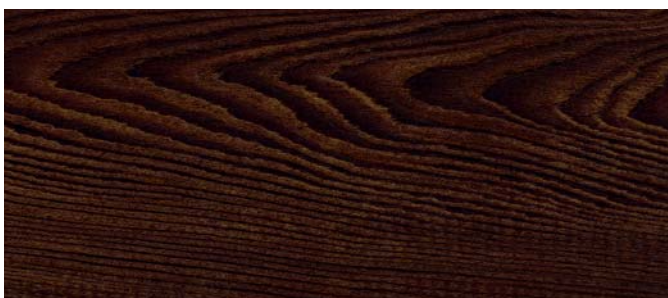
Spiced Timber

SS5W2322



Inked Cedar

SS5W2552



Ember Oak*

SS5W2512



Cellar Oak

SS5W2333

*Not available with an Acoustic backing





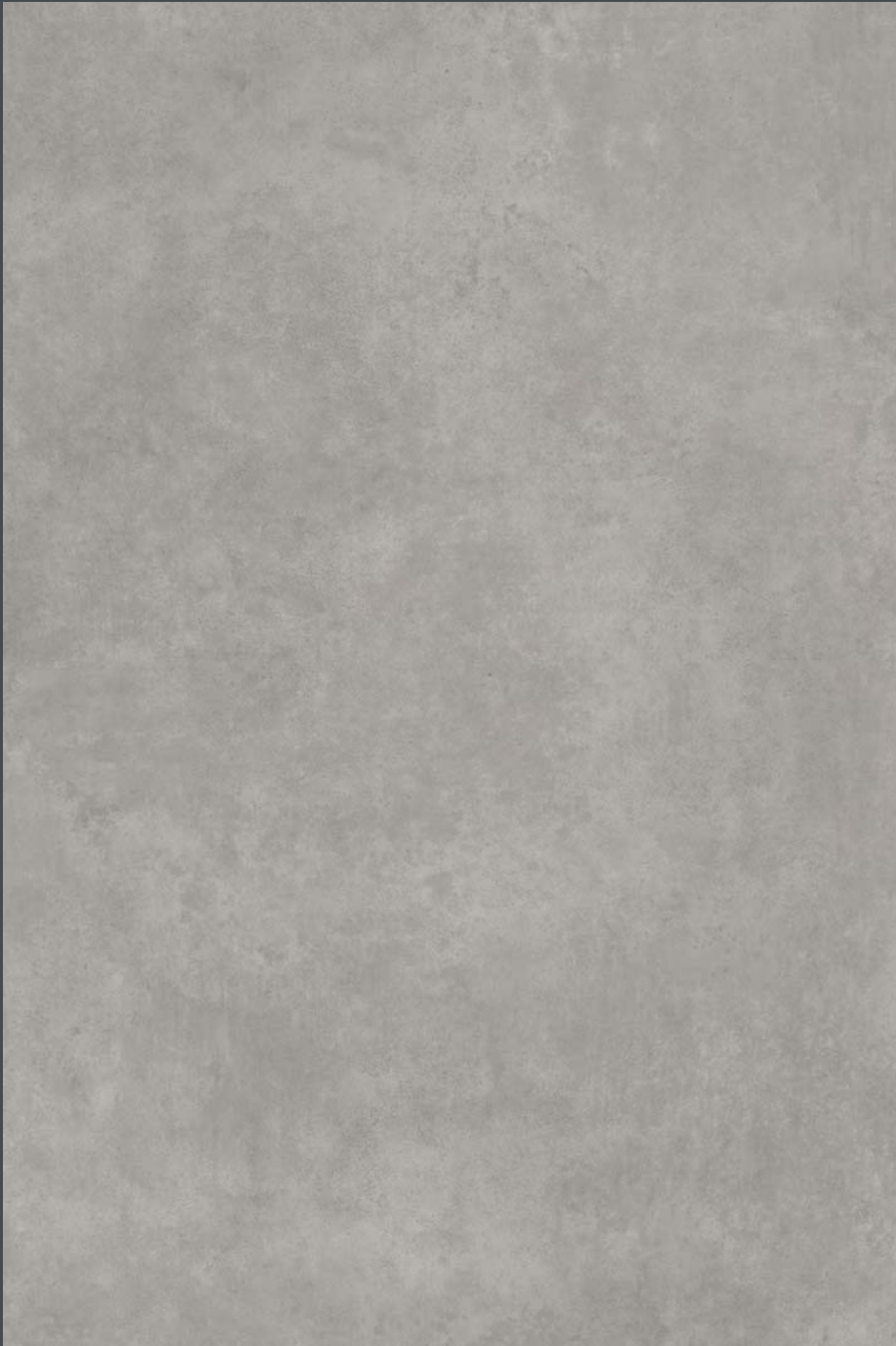
These are our Stones

Introducing

Modern Industrial Efficient Concrete

Pushing industrial interiors to the next level, our new Concrete range removes the challenges presented by poured surfaces and heavy ceramics – offering instead a floor that can be laid quickly and used immediately.

Plaza Concrete – SS5S3070
24" x 36" / 609.6 x 914.4 mm



4

new colourways and a new XL tile size to create an authentic concrete flooring effect.

The XL 24" x 36" tile is a new size exclusive to our Concrete designs.

Gallery Concrete – SS5S3071
12" x 18" / 304.8 x 457.2 mm



Century Concrete – SS5S3069
18" x 18" / 457.2 x 457.2 mm

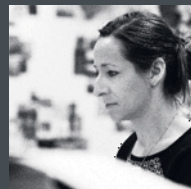


Monument Concrete – SS5S3072
12" x 12" / 304.8 x 304.8 mm



"Spacia's Concretes
present a broad neutral
spectrum, from light and
clean to deep warm tones."

Karen Quarterman
Product Design Manager



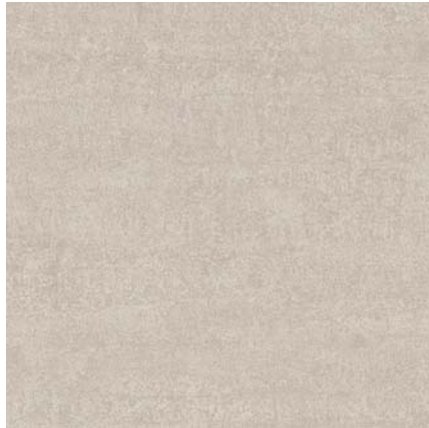


Dry Stone Alba, Concrete Pale stripping – Bonded Stone



Limestone Cool

SS5S1561



Sift Stone Canvas

SS5S6133



Dry Stone Alba

SS5S4401



Crema Travertine

SS5S1589



Bottocino Cream

SS5S4599



Ceramic Ecu

SS5S3592



Jura Stone

SS5S7401



Noche Travertine

SS5S4590



Desert Sandstone

SS5S4607





Ceramic Frost

SS5S1591



Ceramic Light

SS5S1565



Plaza Concrete

SS5S3070



Linear Stone Shale

SS5S3606



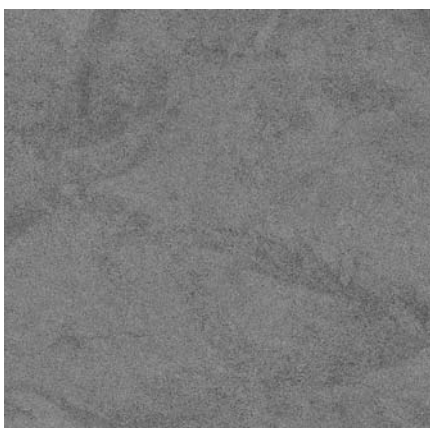
Gallery Concrete

SS5S3071



Pale Grey Slate

SS5S3601



Ceramic Dark

SS5S3566



Monmouth Slate

SS5S7501



Wave Slate Black

SS5S2602





Metropolitan Ice

SS5A2617



Monument Concrete

SS5S3072



Century Concrete

SS5S3069



Metropolitan Smoke

SS5A2627



Ceramic Sable

SS5S3593



Sift Stone Clay

SS5S6123



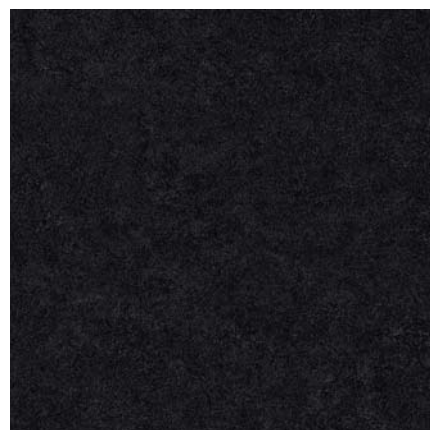
Ceramic Flint

SS5S2594



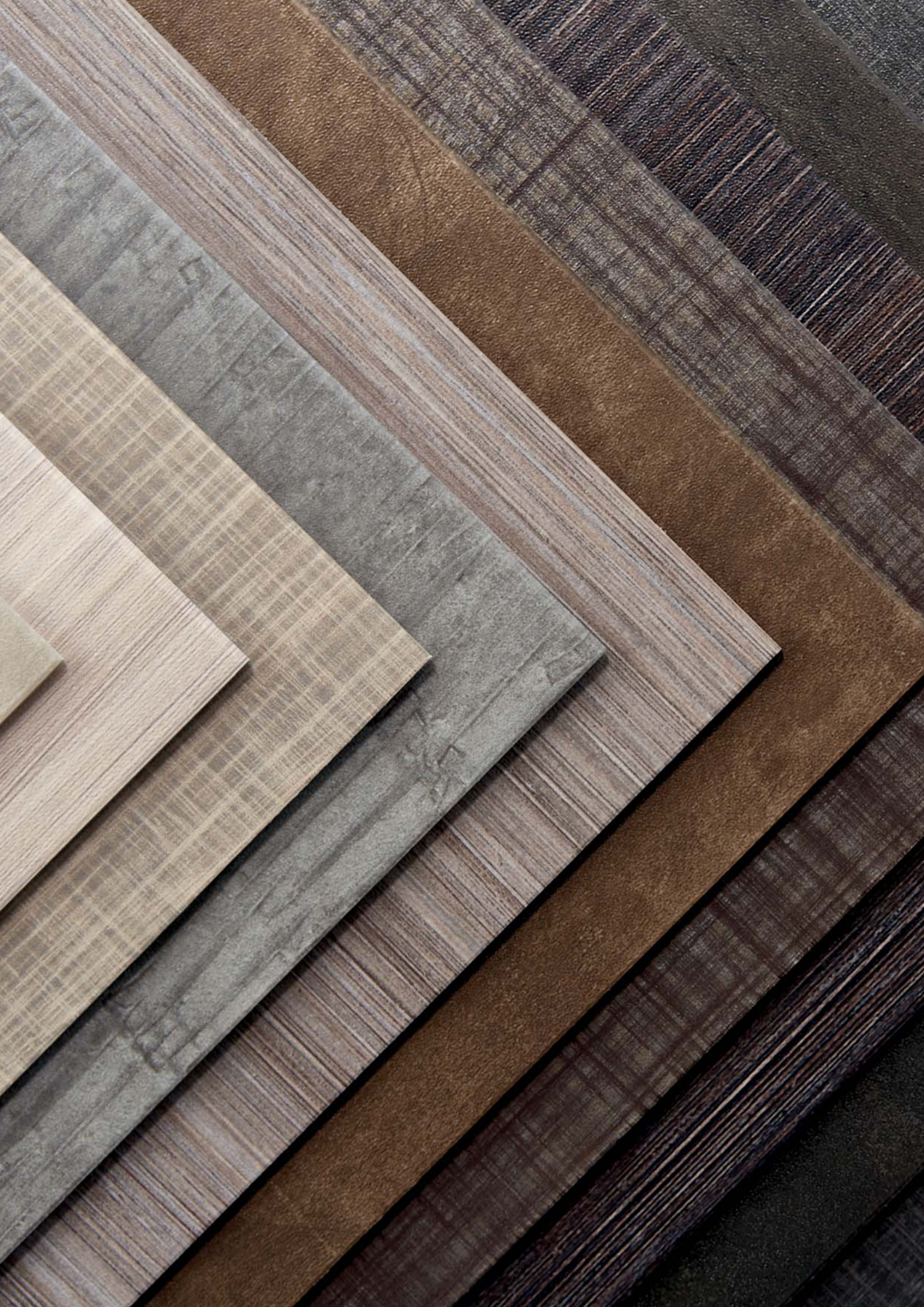
Sift Stone Graphite

SS5S6113



Ceramic Coal

SS5S4422



A stack of dark wood-grain panels is shown on the left side of the page, with a teal-colored overlay on the right. The text is centered within a white rectangular area that is partially covered by the teal overlay.

**These
are our
Abstracts**

Introducing

Subtle Woven Geometric Stellar

One of two innovative Abstracts new to the collection, Stellar's subtle geometry plays with shadow and light to create movement, adding a sense of flow and texture to a space with almost seamless precision.



Stellar Ash – SS5A3629
9" x 36" / 228.6 x 914.4 mm
4" x 36" / 101.6 x 914.4 mm
12" x 18" / 304.8 x 457.2 mm



Stellar Taupe – SS5A3630
9" x 36" / 228.6 x 914.4 mm
4" x 36" / 101.6 x 914.4 mm
12" x 18" / 304.8 x 457.2 mm



Stellar Bronze – SS5A3625
9" x 36" / 228.6 x 914.4 mm
4" x 36" / 101.6 x 914.4 mm
12" x 18" / 304.8 x 457.2 mm



Stellar Grey – SS5A3627
9" x 36" / 228.6 x 914.4 mm
4" x 36" / 101.6 x 914.4 mm
12" x 18" / 304.8 x 457.2 mm



Stellar Smoke – SS5A3626
9" x 36" / 228.6 x 914.4 mm
4" x 36" / 101.6 x 914.4 mm
12" x 18" / 304.8 x 457.2 mm



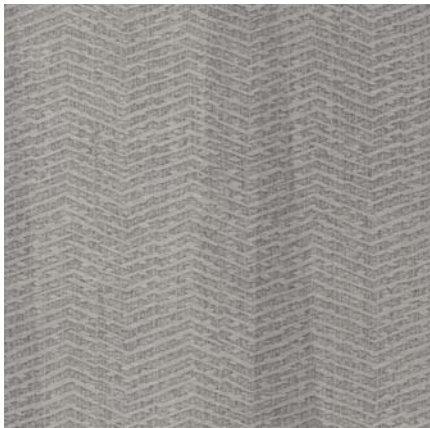
Stellar Black – SS5A3628
9" x 36" / 228.6 x 914.4 mm
4" x 36" / 101.6 x 914.4 mm
12" x 18" / 304.8 x 457.2 mm

"Amtico has a long history of developing unique abstract designs. We really push boundaries when it comes to commercial applications. Stellar is no exception – evoking an architectural feel, like the shapes and shards of light spreading through an atrium."

Lorna Williams
Head of Product Design and Creative Branding

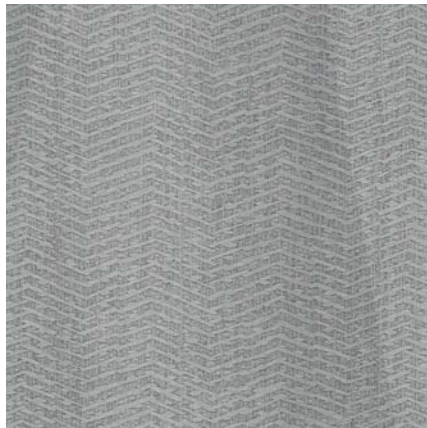






Stellar Taupe

SS5A3630



Stellar Ash

SS5A3629



Stellar Grey

SS5A3627



Stellar Bronze

SS5A3625



Stellar Smoke

SS5A3626



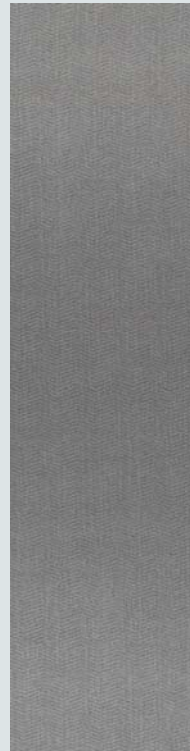
Stellar Black

SS5A3628

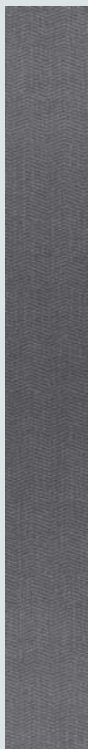
Introducing

Soft Tonal Metallic Skye

The second Abstract new to the collection, Skye has a softer gradient weave and texture, in tones evocative of ceramics. Combine with Stellar to create striking contrast, or use independently for a simple, balanced look.



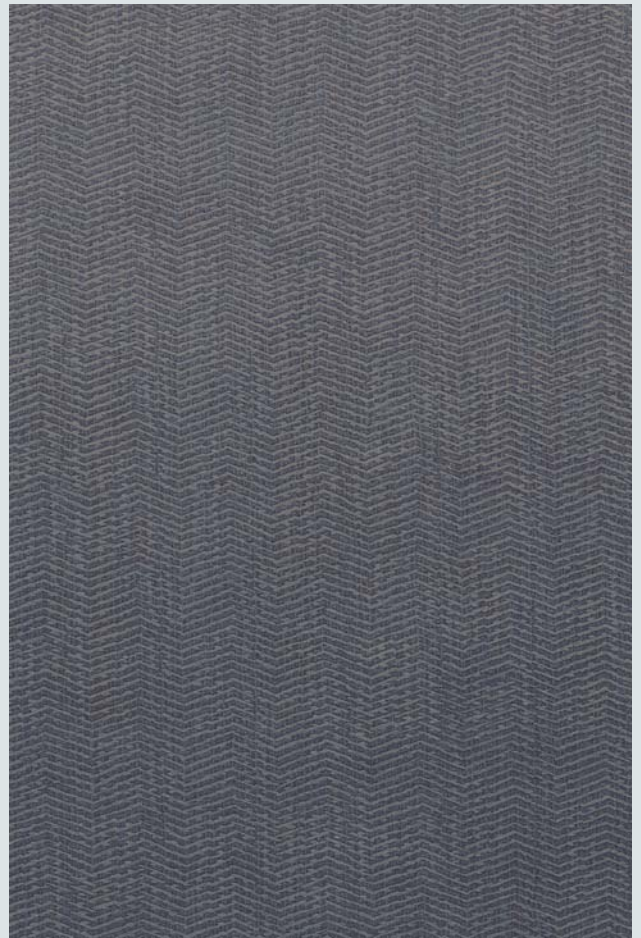
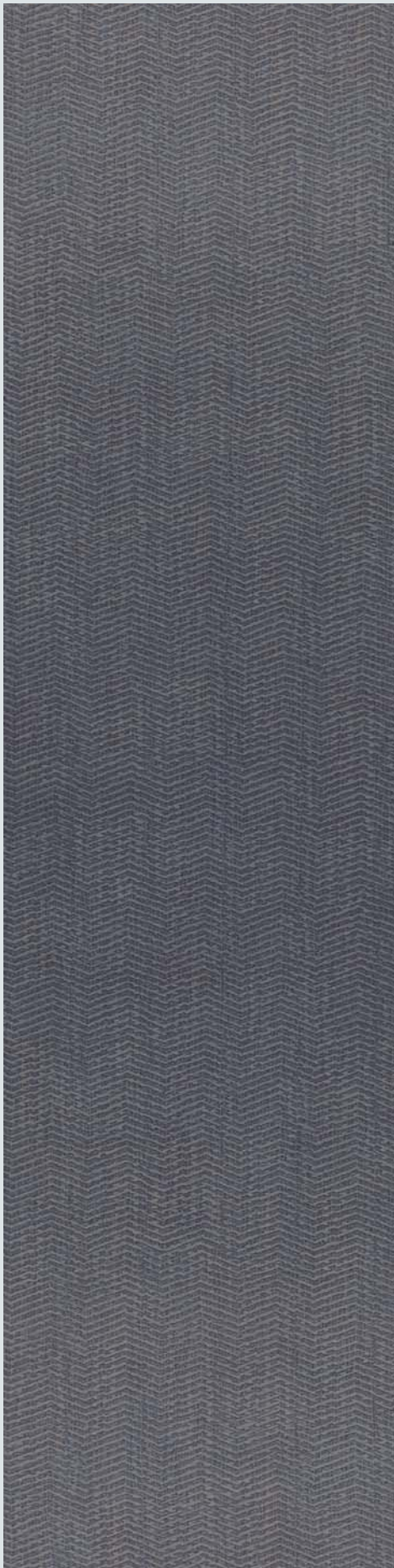
Skye Filter – SS5A3633
9" x 36" / 228.6 x 914.4 mm
4" x 36" / 101.6 x 914.4 mm
12" x 18" / 304.8 x 457.2 mm



Skye Shade – SS5A3632
9" x 36" / 228.6 x 914.4 mm
4" x 36" / 101.6 x 914.4 mm
12" x 18" / 304.8 x 457.2 mm

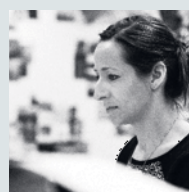


Skye Tint – SS5A3631
9" x 36" / 228.6 x 914.4 mm
4" x 36" / 101.6 x 914.4 mm
12" x 18" / 304.8 x 457.2 mm



"Delicate, muted and multi-tonal Skye works to gently disperse the light, bringing depth and original style to your space."

Karen Quarterman
Product Design Manager







Skye Filter

SS5A3633



Skye Shade

SS5A3632



Skye Tint

SS5A3631





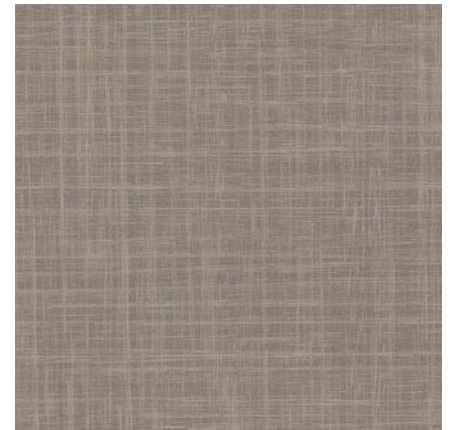
Ridge Shell

SS5A3621



Platinum

SS5A3610



Linen Weave

SS5A3800



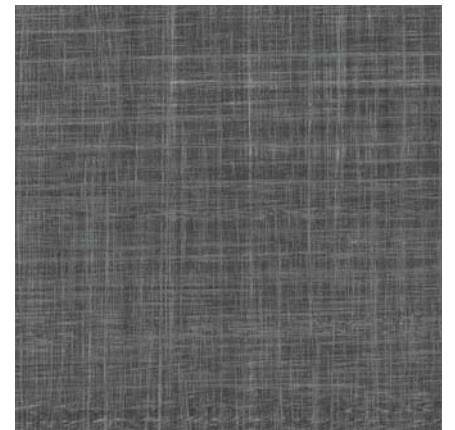
Ridge Slate

SS5A3622



Zinc

SS5A3620



Satin Weave

SS5A3805



Ridge Flint

SS5A3624



Bronze

SS5A4805



Silk Weave

SS5A2801



Ridge Ore

SS5A3623



Steel

SS5A2804



Velvet Weave

SS5A2101





Mirus Cotton

SS5A6110



Mirus Feather

SS5A6120



Mirus Hemp

SS5A6130



Mirus Indigo

SS5A6140



Mirus Henna

SS5A6150



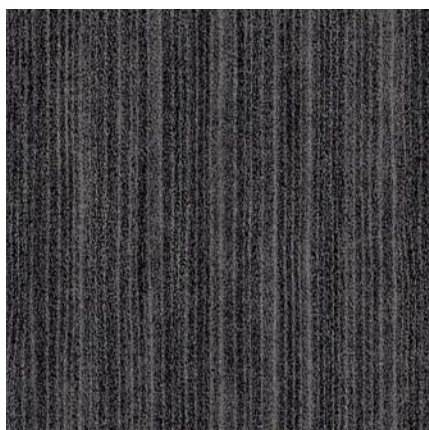
Mirus Ebony

SS5A6160



Softline Pebble

SS5A3802



Softline Charcoal

SS5A2803



Blackened Spa Wood, Drift Pine – Wishbone Plank

These are our Laying Patterns

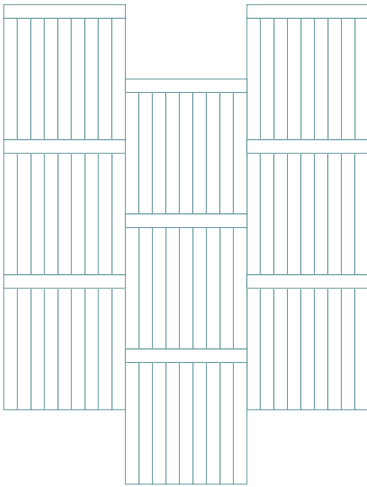


Laying Patterns

Creative expression in a straightforward solution. Our new laying patterns have been created using our standard sized planks and tiles, resulting in floor designs that are quick to specify and easy to install.

Palisade

Large-scale striking nine-plank blocks that adapt exceptionally well to rustic, natural-grained woods.

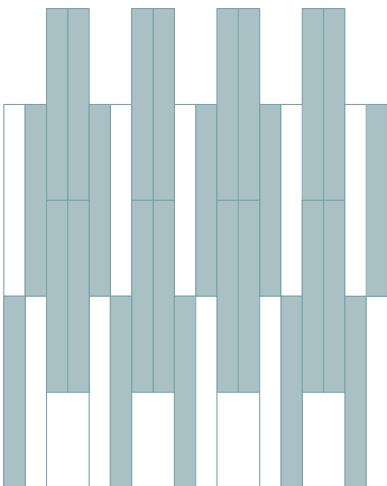


Noble Oak, 4" x 36" / 101.6 x 914.4 mm



Couplet

An original pattern, in alternating pairs of planks that creates off-set geometry which flows through a space.



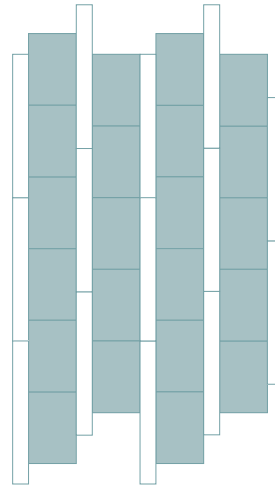
Credenza Oak and Bruges Oak, 4" x 36" / 101.6 x 914.4 mm





Shifting Stone

Combined planks and tiles create broad possibilities in this creative laying pattern. Enhanced with stripping, this creates modular zones and transitions.

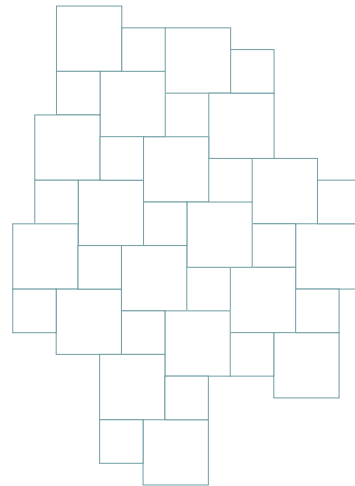


Ceramic Flint, 12" x 18" / 304.8 x 457.2 mm
Ridge Flint, 4" x 36" / 101.6 x 914.4 mm



Field Stone

Subtle and modern, useful in Concretes and Stones defined by feature stripping, Field Stone produces varied scales of classic geometry.



Monument Concrete with Stria Volcanic stripping,
12" x 12", 18" x 18" / 457.2 x 457.2 mm, 304.8 x 304.8 mm

Laying Patterns

Wishbone Plank

This versatile herringbone interpretation works across large spaces in strong colour contrasts or subtle combinations.

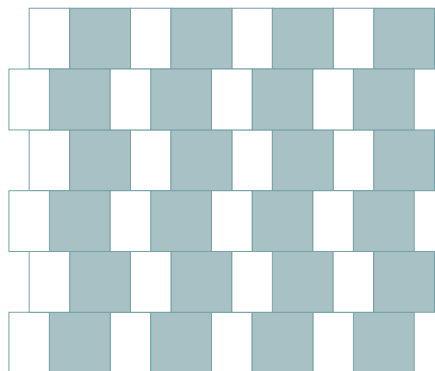


Blackened Spa Wood and Drift Pine,
4" x 36" / 101.6 x 914.4 mm



Offset Tile

A staggered flowing pattern that works particularly well in two complementary Stones, Offset Tile will highlight and divide space for different purposes.



Plaza Concrete, 18" x 18" / 457.2 x 457.2 mm
Ridge Shell, 12" x 18" / 304.8 x 457.2 mm



Feature stripping is available in the following sizes, 2 mm thickness.*

3.2 mm x 914.4 mm



6.4 mm x 914.4 mm



9.5 mm x 914.4 mm



12.7 mm x 914.4 mm



19.1 mm x 914.4 mm



*Sizes shown are not actual size

Integrating our collections

Integrated design, high-performance build.

Why choose Amtico Carpet?

Engineered with the same focus on performance and design that defines all Amtico flooring, our new collection of carpet tiles combine perfectly with Spacia to offer even more possibilities and solutions.

Amtico's range of hard and soft surfaces combine to allow effortless transitions from surface to surface, creating zones and adding colour and texture to activate your space.

Unify
Zone
Transition
Blend
Coordinate
Activate
Elevate



Capital Collection: Network Steel



10YR COMMERCIAL WARRANTY



Amtico Spacia: Ridge Ore



Samples and support

For consultation on integrating flooring we offer expert support worldwide with a free online global supply service for samples.

Full size samples are available from your Area Sales Manager.

amtico
carpet



Amtico Carpet Capital Network Steel, Installed: Brick (back)
Amtico Spacia Ridge Ore, Laid: Uniform Tile (front)

Entryway

Amtico Entryway is a tough, resilient and protective entrance matting featuring reinforced scraper fibres to remove grit and moisture.

Choose from three design styles with a choice of colourways to complement and protect your Amtico flooring. Order samples online at [amtico.com](https://www.amtico.com)

amtico
entryway



Ruffian Ebony Earth, Installed: Monolithic
Shown with Amtico Spacia Smoked Timber – Stripwood



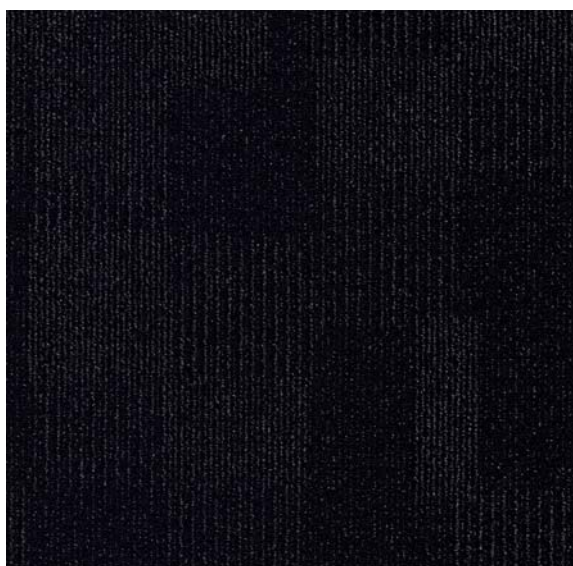
Ruffian Ebony Earth

EERF001506



Ruffian Tan Tetons

EERF008404



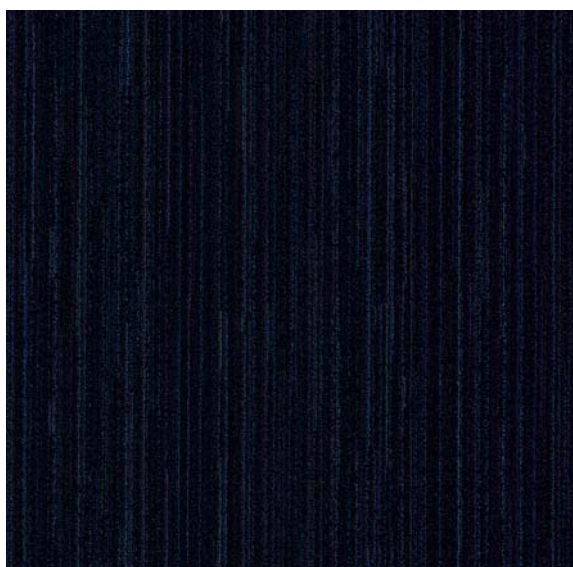
Recoarse Bypass Black

EERC001518



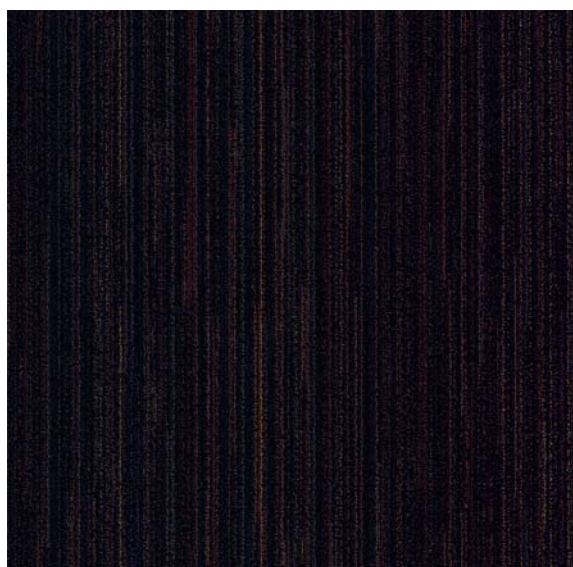
Recoarse Traverse Tan

EERC008413



Take Back Redeem

EETB003520



Take Back Convert

EETB001419

**These are
the Specs**

Technical Specification

Name	Standard	Symbol	Result
CE / DOP	EN 14041		CPR/AI/002
Usage Classification	EN ISO 10874 (EN 685)		23, 33, 42
Manufacturing Standard	EN ISO 10582 (EN 649)		Pass
Total Thickness	EN ISO 24346 (EN 428)		2.5 mm
Wear Layer Thickness	EN ISO 24340 (EN 429)		0.55 mm
Weight	EN ISO 23997 (EN 430)		3,400 g/m ²
Abrasion Resistance	EN ISO 10582 (EN 649)		Type 1 Group T
Residual Indentation	EN ISO 24343-1 (EN 433)		≤0.1 mm
Dimensional Stability	EN ISO 23999 (EN 434)		≤0.25%
Curling	EN ISO 23999 (EN 434)		≤2 mm
Flexibility	EN ISO 24344 Method A (EN 435)		Pass
Slip Resistance	DIN 51130 EN 13893		R10* Class DS
Chemical Resistance	EN ISO 26987 (EN 423)		Excellent
Light Stability	EN ISO 105-B02		≥6
Flammability / Smoke Emissions	EN 13501-1		B _{fl} -S1
Castor Chair Resistance (Type W)	EN ISO 4918 (EN 425)		Pass
Impact Sound Reduction	EN ISO 717-2		3 dB
Thermal Resistance	EN 12664		0.013 m ² K/W (underfloor heating suitable)
Electrostatic Performance	EN 1815		≤2 kV
Emissions			AbZ ref. no Z-156.603-519
Emissions COV		 EMMISSIONS DANS L'AIR INTERIEUR A+ A B C	A+ Information sur le niveau d'émission de substances volatiles dans l'air intérieur, présentant un risque de toxicité par inhalation, sur une échelle de classe allant de A+ (très faibles émissions) à C (fortes émissions).
UPEC	U ₃ P ₃ E ₂ C ₂		Certificate NF-UPEC 326-002.1
Environmental	BRE Green Guide		A+ rating**
Phthalate Free		 Phthalate Free	Yes Amtico Spacia products are manufactured using both phthalate free and bio-based plasticisers except for recycled content.
Surface Treatment			Urethane (Quantum Guard)

For technical information about Spacia Acoustic, please visit [amtico.com](https://www.amtico.com)

*For safety flooring with long-term retention of slip resistance, refer to the Amtico Assura Collection.

**Becomes an A rating when paired with Acoustic backing.

Product Availability

Product Availability: Wood

Product Name	Palette	Product Code	Surface Finish	Straight Grain	
				101.6 x 914.4 mm (4" x 36")	Xtra 184.2 x 1219.2 mm (7.25" x 48")
Black Walnut	Rich	SS5W2534	Tick	•	•
Blackened Spa Wood	Dark	SS5W3025	Barnwood	•	•
Bleached Elm	Neutral	SS5W2516	Tick	•	•
Bruges Oak	Cool	SS5W3034	Barnwood	•	•
Canopy Oak	Warm	SS5W1020	Tick	•	•
Cellar Oak	Dark	SS5W2333	Barnwood	•	•
Classic Cherry	Rich	SS5W2510	Tick	•	•
Coastal Pine	Cool	SS5W3029	Barnwood	•	•
Credenza Oak	Cool	SS5W3035	Barnwood	•	•
Drift Pine	Cool	SS5W3027	Barnwood	•	•
Dry Cedar	Neutral	SS5W2535	Barnwood	•	•
Dusky Walnut	Neutral	SS5W2542	Tick	•	•
Eden Oak	Warm	SS5W1010	Tick	•	•
Ember Oak	Dark	SS5W2512	Natural Grain	•	•
Estuary Pine	Dark	SS5W3028	Barnwood	•	•
Exotic Walnut	Rich	SS5W2541	Tick	•	•
Featured Oak	Neutral	SS5W2533	Tick*/Barnwood	•	•
Hampton Oak	Neutral	SS5W3031	Tick	•	•
Haven Oak	Dark	SS5W3033	Tick	•	•
Honey Oak	Warm	SS5W2504	Tick*/Barnwood	•	•
Inked Cedar	Dark	SS5W2552	Tick	•	•
Limed Wood Natural	Warm	SS5W2549	Tick	•	•
Merchant Wood	Dark	SS5W3026	Barnwood	•	•
New England Oak	Warm	SS5W2527	Tick*/Barnwood	•	•
Noble Oak	Neutral	SS5W3030	Tick	•	•
Nordic Oak	Cool	SS5W2550	Tick*/Barnwood	•	•
Pale Ash	Warm	SS5W2518	Tick	•	•
Pale Maple	Warm	SS5W2501	Tick	•	•
Royal Oak	Rich	SS5W2530	Tick*/Barnwood	•	•
Rustic Barn Wood	Dark	SS5W2513	Barnwood	•	•
Rustic Limed Wood	Neutral	SS5W2650	Tick	•	•
Sash Oak	Cool	SS5W3032	Tick	•	•
Scorched Timber	Dark	SS5W3024	Barnwood	•	•
Sherwood Oak	Rich	SS5W2532	Tick*/Barnwood	•	•
Smoked Cedar	Neutral	SS5W2536	Barnwood	•	•
Smoked Timber	Cool	SS5W2652	Barnwood	•	•
Smoothbark Hickory	Rich	SS5W2545	Tick	•	•
Spiced Timber	Dark	SS5W2322	Barnwood	•	•
Sun Bleached Oak	Neutral	SS5W2531	Barnwood	•	•
Traditional Oak	Warm	SS5W2514	Tick*/Barnwood	•	•
Warm Cherry	Rich	SS5W2506	Tick	•	•
Warm Maple	Warm	SS5W2502	Tick	•	•
Warm Walnut	Rich	SS5W2543	Tick	•	•
Weathered Oak	Cool	SS5W2524	Barnwood	•	•
White Ash	Cool	SS5W2540	Barnwood	•	•
White Maple	Warm	SS5W2654	Tick	•	•
White Oak	Cool	SS5W2548	Tick	•	•
Worn Ash	Neutral	SS5W2539	Barnwood	•	•

*Lead emboss

All products are Quantum Guard urethane coated and bevelled as standard. Please note all sizes and availability are correct at the time of press. Please contact your Area Sales Manager for the latest information.

Product Name	Palette	Product Code	Surface Finish	Straight Grain				Cross Grain
				304.8 x 304.8 mm (12" x 12")	304.8 x 457.2 mm (12" x 18")	457.2 x 457.2 mm (18" x 18")	609.6 x 914.4 mm (24" x 36")	304.8 x 457.2 mm (12" x 18")
Botticino Cream	Pale	SS5S4599	Ceramic	•	•	•		
Century Concrete	Neutral	SS5S3069	Ceramic	•	•	•	•	
Ceramic Coal	Neutral	SS5S4422	Ceramic	•	•	•		
Ceramic Dark	Cool	SS5S3566	Ceramic	•	•	•		
Ceramic Ecru	Pale	SS5S3592	Ceramic	•	•	•		
Ceramic Flint	Neutral	SS5S2594	Ceramic	•	•	•		
Ceramic Frost	Cool	SS5S1591	Ceramic	•	•	•		
Ceramic Light	Cool	SS5S1565	Ceramic	•	•	•		
Ceramic Sable	Neutral	SS5S3593	Ceramic	•	•	•		
Crema Travertine	Pale	SS5S1589	Ceramic	•	•	•		
Desert Sandstone	Pale	SS5S4607	Ceramic	•	•			•
Dry Stone Alba	Pale	SS5S4401	Deep Ceramic	•	•	•		
Gallery Concrete	Cool	SS5S3071	Ceramic	•	•	•	•	
Jura Stone	Pale	SS5S7401	Ceramic	•	•	•		
Limestone Cool	Pale	SS5S1561	Ceramic	•	•	•		
Linear Stone Shale	Cool	SS5S3606	Ceramic	•	•			•
Metropolis Ice	Neutral	SS5A2617	Ceramic	•	•	•		
Metropolis Smoke	Neutral	SS5A2627	Ceramic	•	•	•		
Monmouth Slate	Cool	SS5S7501	Riven	•	•	•		
Monument Concrete	Neutral	SS5S3072	Ceramic	•	•	•	•	
Noche Travertine	Pale	SS5S4590	Ceramic	•	•	•		
Pale Grey Slate	Cool	SS5S3601	Riven	•	•	•		
Plaza Concrete	Cool	SS5S3070	Ceramic	•	•	•	•	
Sift Stone Canvas	Pale	SS5S6133	Deep Ceramic	•		•		•
Sift Stone Clay	Neutral	SS5S6123	Deep Ceramic	•		•		•
Sift Stone Graphite	Neutral	SS5S6113	Deep Ceramic	•		•		•
Wave Slate Black	Cool	SS5S2602	Riven	•	•	•		

All products are Quantum Guard urethane coated and bevelled as standard. Please note all sizes and availability are correct at the time of press. Please contact your Area Sales Manager for the latest information.

Product Availability: Abstract

Product Name	Palette	Product Code	Surface Finish	Straight Grain				Cross Grain			
				101.6 x 914.4 mm (4" x 36")	Xtra 184.2 x 1219.2 mm (7.25" x 48")	304.8 x 457.2 mm (12" x 18")	457.2 x 457.2 mm (18" x 18")	101.6 x 914.4 mm (4" x 36")	Xtra 184.2 x 1219.2 mm (7.25" x 48")	304.8 x 457.2 mm (12" x 18")	228.6 x 914.4 mm (9" x 36")
Bronze	Craft	SS5A4805	Ceramic			•					
Linen Weave	Craft	SS5A3800	Ceramic				•				
Mirus Cotton	Thread	SS5A6110	Ceramic	•	•					•	
Mirus Ebony	Thread	SS5A6160	Ceramic	•	•					•	
Mirus Feather	Thread	SS5A6120	Ceramic	•	•					•	
Mirus Hemp	Thread	SS5A6130	Ceramic	•	•					•	
Mirus Henna	Thread	SS5A6150	Ceramic	•	•					•	
Mirus Indigo	Thread	SS5A6140	Ceramic	•	•					•	
Platinum	Craft	SS5A3610	Ceramic			•					
Ridge Flint	Craft	SS5A3624	Ceramic	•		•					
Ridge Ore	Craft	SS5A3623	Ceramic	•		•					
Ridge Shell	Craft	SS5A3621	Ceramic	•		•					
Ridge Slate	Craft	SS5A3622	Ceramic	•		•					
Satin Weave	Craft	SS5A3805	Ceramic				•				
Silk Weave	Craft	SS5A2801	Ceramic				•				
Skye Filter*	Skye	SS5A3633	Ceramic					•		•	•
Skye Shade*	Skye	SS5A3632	Ceramic					•		•	•
Skye Tint*	Skye	SS5A3631	Ceramic					•		•	•
Softline Charcoal	Thread	SS5A2803	Ceramic				•		•		
Softline Pebble	Thread	SS5A3802	Ceramic				•		•		
Steel	Craft	SS5A2804	Ceramic			•					
Stellar Ash	Stellar	SS5A3629	Ceramic					•		•	•
Stellar Black	Stellar	SS5A3628	Ceramic					•		•	•
Stellar Bronze	Stellar	SS5A3625	Ceramic					•		•	•
Stellar Grey	Stellar	SS5A3627	Ceramic					•		•	•
Stellar Smoke	Stellar	SS5A3626	Ceramic					•		•	•
Stellar Taupe	Stellar	SS5A3630	Ceramic					•		•	•
Velvet Weave	Craft	SS5A2101	Ceramic				•				
Zinc	Craft	SS5A3620	Ceramic			•					

*Skye products should always be laid Brick or Broken Bond. To ensure correct pattern gradient repetition, tile should be laid in regular format, with pattern running dark to light (12" x 18" tile only).

All products are Quantum Guard urethane coated and bevelled as standard. Please note all sizes and availability are correct at the time of press. Please contact your Area Sales Manager for the latest information.

	1016 x 914.4 mm (4' x 36")	Xtra 184.2 x 1219.2 mm (7.25' x 48")	304.8 x 304.8 mm (12" x 12")	304.8 x 457.2 mm (12" x 18")	457.2 x 457.2 mm (18" x 18")	609.6 x 914.4 mm (24" x 36")	228.6 x 914.4 mm (9" x 36")
Plank/Tile per Box	27	9	27	18	12	5	12
m ² per Box	2.50	2.0	2.50	2.50	2.50	2.78	2.51
Weight (kg) per Box	9.5	7.1	9.06	8.8	9.06	11	9.5
Boxes per Pallet	72	90	72	72	72	48	72
m ² per Pallet	180.0	180.0	180.0	180.0	180.0	133.4	180.6
Weight (kg) per Pallet	706.75	664.06	675.07	656.35	675.07	549.5	704.0

Installation and Adhesives

Introduction and Areas of Use

Installation of Amtico tiles is straightforward, and follows the same guidelines that apply to all quality resilient tile floors.

Amtico Spacia is suitable for use in most heavy commercial and residential areas.

In all cases Amtico International products are not suitable for external installation or in unheated locations.

Receiving Materials, Conditioning and Storage

Before laying flooring, all materials must be checked to ensure that the batches are identical and free from defects. Complaints with regard to clearly identifiable defects cannot be accepted once the flooring has been laid.

Boxes of tiles should be removed from pallets and separated from one another as part of the acclimatisation process. Ensure that the heating/air conditioning is fitted and operating. Alternatively, temporary heating or cooling may be used to maintain a constant temperature within the specified range.

Tiles, adhesive and subfloor must be allowed to stabilise to a constant temperature between 18-27°C for a period of at least 24 hours before, during and after installation. If tiles and adhesive have been stored outside of this temperature range, then it is recommended that acclimatisation is increased to 48 hours. Tiles must be stored flat and kept away from direct sunlight, heaters or air vents for proper conditioning.

Preparation and installation should not begin until all other trades have been completed.

Subfloor Preparation

The suitability of subfloors and site conditions must be assessed prior to beginning an installation to ensure that they are in accordance with Amtico International and subfloor manufacturers' guidelines and national standards.

Good preparation is essential as the finished appearance of the floor will only be as good as the quality of the base and preparation over which it is installed. The base should be hard, smooth, clean, dry and free from defects. The surface should be even in order to achieve good fitting and adhesion. Any irregularities in the subfloor will show through the finished floor.

The guidance notes provided by Amtico International are intended to give general information on the methods that can be used to prepare various subfloor types.

The quality and preparation of subfloors, testing for moisture content and relative humidity, and installation procedures must be in accordance with Amtico International technical guidelines and country specific standards (BS 8203 and BS 8204 for UK).

Moisture in Subfloors

Moisture testing of all subfloors is essential before installation can begin. This is true of new and old buildings. Moisture testing must be carried out and recorded. All moisture tests must be undertaken in accordance with local regulations (e.g. BS 8203 for UK) and using an appropriate method to suit the subfloor type.

The subfloor may be considered dry when the relative humidity is 75% or below. If readings are above this level, a surface damp-proof membrane can be applied. Consult manufacturers for instructions. Alternatively subfloors can be given sufficient time to dry.

Solid Subfloors

Concrete/Sand and Cement

Tiles must only be installed on suitably dry concrete or sand and cement subfloors. Drying time will depend on several conditions, including thickness of slab, location, type of construction, temperature and humidity. New concrete bases contain a high percentage of residual moisture.

Subfloors must be thoroughly mechanically cleaned of all paint, curing agents, grease, wax and any other foreign matter. The use of solvents to remove surface contaminants is not permitted.

The floor must be hard, smooth, level and free from cracks. Use a suitable repair compound to fill grooves, cracks, holes and depressions.

Please refer to section titled Levelling/Smoothing Compounds for Solid Subfloors.

Power Floated Concrete

Power floated concrete has a relatively nonabsorbent, low-porosity surface that will increase the drying time. It is not a suitable surface for direct application of adhesive. Surface laitance may also be produced by the power floating procedure. For these reasons, it is recommended that an appropriate method of mechanical preparation such as shot blasting or scarifying is used to prepare the surface.

Please refer to section titled Levelling/Smoothing Compounds for Solid Subfloors.

Anhydrite (Calcium Sulphate)

Anhydrite screeds can be difficult to identify and can be mistaken for the more traditional cement based products.

Provided ambient conditions are acceptable, anhydrite screeds dry at a similar rate to their cement-based counterparts. In the case of the floor screed not being sufficiently dry, please consult the manufacturer on how to proceed, in most cases the screed should be allowed to dry out to an acceptable level.

When the floor is sufficiently dry preparation can begin. Please refer to section titled Levelling/Smoothing Compounds for Solid Subfloors.

Asphalt

Mastic asphalt is normally applied between 15 and 20 mm thickness and sets to a dense hard mass which is impermeable to moisture and therefore forms an efficient damp-proof membrane. Mastic asphalt is often applied over an existing concrete base which lacks a conventional DPM. If the asphalt is cracked or damaged it will need to be repaired and damp proofing may be required.

The asphalt will need to be cleaned before preparation can begin. Please refer to section titled Levelling/Smoothing Compounds for Solid Subfloors.

Levelling/Smoothing Compounds for Solid Subfloors

Most solid subfloors will require an application of a compatible compound to provide a hard, smooth and level surface to which adhesive and tiles can be applied.

The selection of a suitable compound is critical in determining the long-term durability and appearance of the flooring system. Generally these compounds should be applied at a minimum of 3 mm thickness. The manufacturer of this compound can supply details of the product within their range that should be used to suit the end use application, together with details of which primer should be used.

Expansion Joints

Expansion joints are incorporated into concrete floor slabs in order to permit movement without causing cracks to form. These joints should not be filled with smoothing compound or overlaid with Amtico floor coverings. In all cases they should be mirrored through to the surface.

Timber Floors

Existing Floorboards

Loose floorboards should be firmly nailed down and any damaged boards replaced. If necessary, the boards should be planed and/or levelled with a suitable levelling compound prior to covering with plywood. See section on Plywood Overlays.

Wood subfloors that exhibit excessive deflection, or are "springy" or "give" when walked on are not suitable for installing Amtico tiles unless suitable remedial work is carried out.

Chipboard, Hardboard, Particleboard

Tiles should not be adhered directly to such subfloors whether they are free floating or fixed, and floors should always be overlaid with plywood prior to installation of tiles. See section on Plywood Overlays.

Wood Block Floors

Existing wood block floors laid onto a concrete base are unsatisfactory as an underlayment for resilient floors, even when plywood has been fitted. Such floors must be lifted and the subfloor suitably prepared.

Plywood Overlays

Plywood should be a minimum nominal thickness of 5.5 mm with a Plywood classification EN636-2 or 3, and a glue bond classification EN314-2 Class 3 Exterior. The thickness selected should be determined by the quality of the surface being covered.

Panels should be acclimatised to the site conditions as recommended by the supplier. Plywood should be protected against damage or water prior to application.

The plywood should be laid in sheet sizes not exceeding 2,440 x 1,220 mm, and fixed using screws or ring shank nails. Fixings should be 2.5 times the depth of the plywood selected, but should not protrude below the timber base. Fixing should start at the centre of each sheet – screwing or nailing at 150 mm intervals at intermediate centres and at 100 mm centres along the perimeters with the fixing line 12 mm from the edge. All fixings should be finished flush with the surface.

Joint lines should be staggered, and every effort made to prevent coincidence of joints in the sheets and the timber base.

We would recommend the use of a suitable compound to ensure the joints of the plywood and all fixings are not visible when the installation is complete. The manufacturer of this compound can supply details of the product within their range that should be used to suit the end use application together with details of which primer should be used.

Other Subfloor Types

Existing Resilient Floors

It is recommended that Amtico products are not directly applied over existing resilient floors. Generally, the old flooring should be removed and the base prepared to suit the type of subfloor uncovered. Please refer to relevant section.

Some older resilient tiles and adhesives can contain asbestos. In case of doubt, contact the relevant local authority for advice on their removal and disposal.

Terrazzo, Stone, Quarry Tiles

Some existing flooring materials such as quarry tiles, ceramic or terrazzo may be suitable for the installation of Amtico tiles if properly prepared. These bases may be sufficiently porous to allow moisture to pass through to the back of the tile, and must be checked for moisture and damp-proofed if necessary. Worn and damaged areas must be repaired, including any tiles that are insecure, which must be removed.

The surface must be thoroughly cleaned of all sealants and varnishes, as well as foreign matter such as oil, grease, wax, etc. It is recommended that a suitable mechanical method is used to prepare the surface, as this will also provide a satisfactory surface ready for preparation. Please refer to section titled Levelling/Smoothing Compounds for Solid Subfloors.

Metal

(i) Direct Application

The metal surface should be cleaned/degreased and then prepared by grinding or scarifying to ensure that it is clean and free from any contamination, such as rust or metal oxide. It should then be mechanically abraded to give a surface key. Amtico tiles can then be installed onto the prepared surface using Amtico International Universal 2-Part Adhesive.

Note that under no circumstances should a water-based adhesive be used for bonding directly to metal.

(ii) Indirect Application

The metal surface should be cleaned/degreased and then prepared by grinding or scarifying to ensure that it is clean and free from any contamination, such as rust or metal oxide. It should then be mechanically abraded to give a surface key.

A suitable primer should be applied to the metal surface prior to putting down a suitable compound, which must be applied as recommended by the manufacturer.

Once the levelling compound has dried, any adhesive from our range can potentially be used subject to the restrictions described in the Adhesive section.

Raised Access Floors

Amtico tiles cannot be fitted directly to raised floor panels. Where this is required, the panels should be level and stable, and then overlaid with plywood, using appropriate fixings to suit the panels surface – see section on Plywood Overlays.

Underfloor Heating

There are various types of underfloor heating systems available – including hot water pipes embedded in the subfloor and electrical systems that can be laid onto the surface of the subfloor. In all cases, the temperature limitations are the same – the heating system must operate so that the temperature at the subfloor surface (i.e. the adhesive interface) should not exceed 27°C.

The heating system must be commissioned before the floor tiles are installed, to ensure that the subfloor is stable, the heating system is working as required with no leaks or cable breaks.

Underfloor heating should be switched off for 48 hours before, and should not be switched back on until 48 hours have elapsed after installation. It is recommended that the heating is slowly reapplied, avoiding full operating temperature for 7 days.

With underfloor heating systems, it is the responsibility of the manufacturer and/or installer to recommend appropriate procedures and materials for producing a surface suitable for installing floor tiles. For electrical systems, this will require that the heating elements are fully embedded in a well-bonded and appropriate levelling compound, and that the temperature is adequately controlled to maintain the temperature of the subfloor surface at a maximum of 27°C.

Care should be taken in the placing of large insulating items such as rugs, beanbags and towels onto floors containing underfloor heating. This can result in localised “hot-spots” which may lead to discolouration of the tiles. No responsibility can be accepted under these circumstances.

Adhesive Selection and Application

Only Amtico adhesives should be used – others may not give adequate performance and could fail.

Amtico SF Adhesive (UK & Europe)

SF Adhesive is a very low-emissions (EC1 Plus), water-based acrylic adhesive with a working time of 1 hour that is recommended for use in all areas except those subject to heat and moisture.

Amtico PS Adhesive (UK)

PS Adhesive is a water-based acrylic adhesive that has an extended working time of 3 hours and is recommended for all areas except those subject to temperature change or moisture.

Amtico HT Adhesive (UK)

HT Adhesive is a very low emissions (EC1 Plus), single-part, wet-set water-based acrylic adhesive that has very good temperature resistance; it has a working time of 30 minutes.

It is recommended for areas subject to some heat variations, such as conservatories and areas receiving direct sunlight. It is also suitable for use where underfloor heating has been installed.

Amtico HT Extra Adhesive (UK & Europe)

Amtico HT Extra is a single-part, wet-set, water-based adhesive with very low emissions (EC1 Plus). It has a working time of 20 minutes.

It is a highly shear-resistant dispersion adhesive to be used as a wet-set adhesive on absorbent surfaces. It has a short open time, easy application and high-grab adhesion for installing Amtico flooring.

Amtico Universal 2-Part Adhesive (UK & Europe)

Universal 2-Part Adhesive is a wet-set adhesive that can be used for bonding Amtico tiles in wet areas such as bathrooms. It may also be used for high temperature areas. Universal 2-Part has a working time up to 60 minutes, is entirely solvent free and classified as EC1R Plus very low emissions.

Application:

Follow the instructions on the packaging. Spread adhesive evenly using an A2 trowel. Do not use worn trowels.

Only spread sufficient adhesive that can be covered within the recommended working time.

Tiles should be rolled with a 45kg (100lbs) roller after installation to flatten the adhesive ridges, and then again approximately 20 minutes after this to ensure full contact.

Always clean away excess adhesive before it is allowed to dry – use a soft cloth moistened with Amtico Adhesive Remover. Dried adhesive can be removed by carefully scraping it off the tile, or by using a 3M red pad moistened with Amtico Adhesive Remover.

Wear and Care Advice

Daily Sweeping and Dust Mopping

- Pick up litter and thoroughly sweep floor area using a dry dust mop
- Pick up debris with a dustpan and brush
- Vacuum entrance mats and crevices at all entrances

Manual Mopping

Manual mopping is used for soil removal in small or congested areas (including within large floors) and some mark removal. Spray cleaning may be required for heavier surface marking.

- Put out signs to warn people that cleaning is in progress
- Prepare a solution of Amtico Maintainer diluted in accordance with the instructions on the label
- Using a two-bucket mopping system, apply solution using a damp mop to remove soiling
- Mop using overlapping strokes
- Rinse the mop frequently and change the solution as necessary
- Allow entire floor area to dry thoroughly
- Remove "caution" signs
- Ensure all equipment is cleaned thoroughly after use and stored safely

Tips

- In conditions of heavy soiling, perform a pre-wash by preparing a solution of Amtico Maintainer diluted in accordance with instructions on the container and pre-wash heavily soiled areas
- Where dirt has become ingrained over time we would recommend that the floor is deep cleaned
- To help remove stubborn scuff marks use a non abrasive 3M red pad or equivalent
- Any surface marking that is not removed by routine manual mopping may be removed by occasional spray cleaning
- Spills of water, grease, food, chemicals and other foreign matter or use of inappropriate cleaning products may cause the floor to become slippery. Wipe up spills immediately with an absorbent cloth, then wash thoroughly with a properly diluted solution of Amtico Maintainer or Spillage Remover until the spill area is completely clean. Rinse and allow to dry thoroughly
- At least once a year the floor should be scrubbed thoroughly to remove ingrained dirt and floor dressing if applied

Spray Cleaning

Spray cleaning can be used for light soil removal in small/medium size areas and removal of most scuff marks from all floor sizes. In conditions of heavy soiling, perform a pre-wash by preparing a solution of Amtico Maintainer diluted in accordance with the manufacturer's instructions and pre-wash heavily soiled areas.

- Put out signs to warn people that cleaning is in progress
- Pour a diluted solution of Amtico Maintainer solution in to a suitable spray container
- Apply a fine mist of liquid on to an area of approximately 2 square metres at a time. Use a rotary buffing machine (approx. 450 rpm) fitted with a red 3M nylon scrubbing pad (or equivalent). Do not buff with any pad more abrasive than a red 3M (or equivalent) pad
- Work in parallel overlapping passes until the floor is clean and dry
- Allow entire floor area to dry thoroughly
- Remove "caution" signs
- Ensure all equipment is cleaned thoroughly after use and stored safely

Tips

- Where dirt has become ingrained over time we would recommend the floor is deep cleaned
- Spills of water, grease, food, chemicals and other foreign matter or use of inappropriate cleaning products may cause the floor to become slippery. Wipe up spills immediately with an absorbent cloth, then wash thoroughly with a properly diluted Amtico Maintainer or Spillage Remover until the spill area is completely clean. Rinse and allow to dry thoroughly
- At least once a year the floor should be scrubbed thoroughly to remove ingrained dirt and floor dressing if applied

Scrubber Drying – Large Areas

Scrubber drying can be used for soil removal in large installations and some mark removal.

- Put out signs to warn people that cleaning is in progress
- Prepare a solution of Amtico Maintainer and pour in to the dispensing tank. The scrubber dryer should be fitted with a red or blue 3M nylon scrubbing pad (or equivalent) or brush
- Scrub entire floor area
- Ensure vacuum pick up is operating efficiently
- Once entire floor area is dry remove "caution" signs
- Ensure all equipment is cleaned thoroughly after use and stored safely

Tips

- Spills of water, grease, food, chemicals and other foreign matter may cause the floor to become slippery. Wipe up spills immediately with an absorbent cloth, then wash thoroughly with a properly diluted solution of Amtico Maintainer until the spill area is completely clean. Rinse and allow to dry thoroughly
- Any surface marking that is not removed by scrubber drying, may be removed by occasional spray cleaning
- Soiling in congested areas should be removed using manual mopping
- At least once a year the floor should be scrubbed thoroughly to remove ingrained dirt and floor dressing if applied

Guide to Stripping and Deep Cleaning

- Before commencing work, put out signs to warn people that cleaning is in progress
- Sweep floor to remove debris and vacuum entrance mats
- Prepare a solution of Amtico Stripper using warm water as per instructions on the label
- Carefully follow all safety instructions, particularly noting that the floor can become slippery during the stripping process
- Apply plenty of solution over a manageable area using a mop and bucket. Allow 10-15 minutes contact time
- Agitate the solution using either a low speed rotary machine with a green 3M (or equivalent pad) or with a mop. Edges will need to be agitated manually. Do not allow the slurry to dry
- Remove slurry with wet vacuum machine or mop and bucket. Rinse floor twice with clean water, allow to dry
- Remove "caution signs"
- Ensure all equipment is cleaned thoroughly after use and stored safely

Guide to Application of Dressing

If a protective finish is required or if you are seeking to restore the appearance of an older Amtico tile floor, an application of Amtico Dressing is an option.

Dressings can be applied following stripping of Amtico tile floors. Ensure floor is clean and completely dry prior to applying dressing. Do not use the same equipment for stripping as that used for application of Amtico Dressing.

- Pour a quantity of Amtico Dressing in to bucket
- Load a clean flat applicator mop with dressing
- Starting at the furthest point from the exit, apply a thin even coat around the perimeter and fill in with overlapping passes and allow to dry (for approx 30 minutes in good ventilation)
- Apply a second coat at right angles to the first. Allow to dry
- Do not buff for 24 hours
- All equipment should be cleaned thoroughly after use and stored safely

Our ethos is to combine creativity and innovation with the highest levels of quality – quality of design, manufacturing, product and service.

	<p>The Amtico Spacia range is verified and certified as A+ on the BRE Global Green Guide Online for use in retail, domestic, education, commercial, healthcare, industrial, hospitality and leisure sectors.</p>		<p>Amtico Spacia products have received the mark of quality issued by the CSTB (French Standards organisation) and have been UPEC classified, therefore conforming to local French legislation.</p>
<p>Z-156.603-519</p>	<p>Amtico Spacia products comply with German building regulations as certified by DIBt.</p>		<p>The CE mark is a confirmation by Amtico that our products are in compliance with European health, safety and environmental requirements (as required by Council Directive 89/106/EEC and detailed in EN 14041).</p>
	<p>Amtico is a member of the professional association for flexible floor covering manufacturers in Germany.</p>		<p>Amtico International GmbH is a member of the DGNB German Sustainable Building Council.</p>
	<p>Our quality system complies with BS EN ISO 9001 and is certified by LRQA.</p>		<p>Recognised around the globe, our BSI accreditation represents the latest and highest standard of environmental impact awareness, operational control and use of materials.</p>
	<p>Amtico Spacia products are third party certified for low-VOC emissions contributing towards good indoor air quality.</p>		<p>SOLS PVC Pro is the French professional organisation of PVC flooring manufacturers; standing for their shared values and commitments related to environment, comfort, regulation and communication.</p>
	<p>Amtico Spacia products are manufactured using both phthalate free and bio-based plasticisers except for recycled content.</p>		<p>Amtico International partenaire de Sols Pvc^{PRO}</p>



10YR COMMERCIAL WARRANTY

Warranty

All Amtico Spacia products come with an Amtico commercial product warranty against wear-out. For full details, visit amtico.com

**This is us,
Amtico**



As designers, manufacturers, technologists and consultants, we work closely together to pioneer the crafted design creativity, product innovation and service that has built our industry-leading reputation.

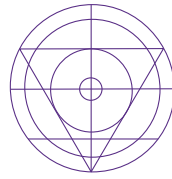
Flawless, from design to delivery.

Our design is driven by imagination, curiosity and creativity. We take risks, travel the globe for inspiration and stay ahead of trends.

We bring you enduring performance, and the quality you would expect from a British manufacturer.

The result is loyal customer relationships, and trust in our ability to deliver the stylish, high-quality floors our clients need.

Amtico makes it possible.



EXPERT
KNOWLEDGE

The unrivalled knowledge, expert support and bespoke service you'd expect from a market leader with over 50 years experience.



"We're industry leaders dedicated to creating flooring that's not only beautiful, but durable and sustainable. We work harder and work smarter, to give you expert support and outstanding service."

Jonathan Duck
Amtico CEO



Ever
innovative,
always
original.



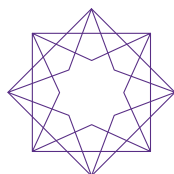
From design to delivery, we take pride in rigorous testing and quality control. At every step of the Amtico process are trusted experts with specialist knowledge and industry experience. Our quality system complies and is accredited against the internationally recognised standard of ISO 9001:2008.

Trusted Experts

Every member of the Amtico team is responsible for quality. We strive for perfection: that's what helps us to continually improve and stay market leaders. Our trusted experts are driven to lead industry standards for product and service. It's our collective passion for flooring that leads to long-term customer relationships and a long-serving, experienced workforce.

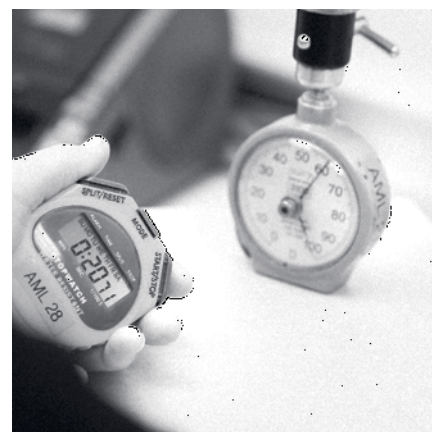
"We supply a full service, not just a floor. From the highest-quality raw materials to our next day direct delivery service we're focused on continually improving our process."

Gary Wilson
Head of Technical



PERFORMANCE
ASSURED

Thanks to the exceptional quality and durability our manufacturing excellence brings, we're so confident in the performance of our products we offer a 10 year commercial warranty.



13

manufacturing checks, including colour, audit traceability and component specification.

12

finishing checks including gauge, bevelling and packaging.

18

post-production checks including adhesion, wear layer thickness and curl testing.

Quality guaranteed, at every step.



Recognised around the globe, our BSI accreditation represents the latest and highest standard of environmental impact awareness, operational control and use of materials.



For more than 50 years we've been combining design creativity with the highest levels of quality, manufacturing and innovation to bring you the continuity of care and technical expertise of an enduring British brand.

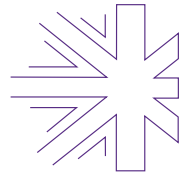
We're proud to be designed in Britain.

This means our team can work together to push the boundaries of flooring by experimenting with products and techniques, sharing skills and expertise; collaborating to create products that are both beautiful and technically excellent. Products you can trust because they are made with pride.

Trust in the enduring performance of our products, our agile service and sustainable supply chain sits at the heart of our loyal customer relationships. These relationships are managed by our expert Customer Support team, which looks after your project with care every step of the way.

"We work together to create skilfully engineered products that combine incredible aesthetics with outstanding technical performance."

Ian Lloyd
Head of Manufacturing



BRITISH
EXCELLENCE

We're not just made in Britain, we're designed, innovated, and manufactured here. From our proud heritage comes an agile service and sustainable supply chain.



British designed, world leading.

Sustainability

Make an impact, but not on the environment.

We're committed to environmental responsibility and the Spacia Collection is a low-level environmental impact product.



"Sustainability is a holistic process – from ethical supply chains to our carbon footprint we're committed to leading standards."

Ben Naylor
Manufacturing and
Supply Director



SUSTAINABILITY

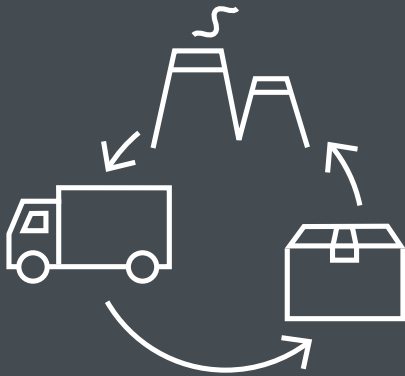
We take sustainability seriously. That's why the Spacia Collection achieves the top A+ BREEAM/BRE¹ Green Guide rating, why we're leading industry standards and why we're the sustainable choice across all sectors.



¹BRE Global Green Guide compares flooring specifications and compares their environmental impact on a scale of A+ (lowest environmental impact) to E (greatest environmental impact).



Recognised around the globe, our BSI accreditation represents the latest and highest standard of environmental impact awareness, operational control and use of materials.



PRE-PRODUCTION

We have a sustainable supply chain, customer audited ethical trading policy and commitment to using phthalate free products, recycled glass beads and bio-based plasticiser.



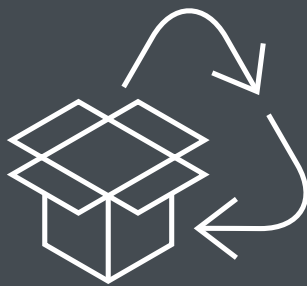
PRODUCTION

Spacia LVT is manufactured using 30% recycled waste content and our energy, water, waste, ecology and emissions have been independently verified and contribute to the attainment of the BRE Global Green Guide online A+ classification. Almost all production waste is recycled back into product and Antico sends zero waste to landfill.



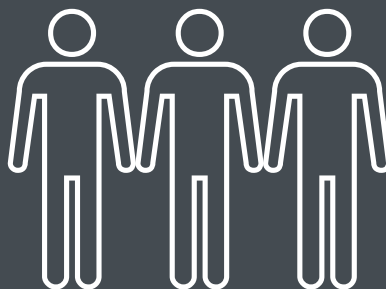
WELLBEING

We pay attention to our health and working conditions, offer support and services to all colleagues to keep ourselves healthy and aware of our wellbeing.



POST-PRODUCTION

All our packaging can be recycled and almost 100% of our internal packaging is reused or recycled. Any flooring we can't reprocess is supplied for other PVC use and our direct delivery service reduces our carbon footprint.



LEADING STANDARDS

Our Environmental Management System is ISO 14001:2015 certified. We're dedicated to raising environmental awareness across suppliers and contractors and support local environmental projects.



POLICY

We set ourselves tough targets to meet environmental commitments through an Environmental Policy, taking care to protect ourselves and our neighbours.

amtico
makes it
possible

**Amtico UK &
European Sales**

Solar Park Southside
Solihull, West Midlands
B90 4SH

UK Sales
+44 (0) 121 745 0800
samples@amtico.com

South European Sales
+44 (0) 121 745 0862
sales.soe@amtico.com

Amtico Head Office

Kingfield Road
Coventry
CV6 5AA
+44 (0) 24 7686 1400
samples@amtico.com

**Amtico International
Germany**

Im Taubental 11
41468 Neuss
+49 (0) 2131 359 16 0
info@amtico.de

**Amtico International
France**

12 Rue Pernelle
75004 Paris
+33 (0) 1 55 38 95 70
info@amtico.fr

**Amtico International
Scandinavia**

Isafjordsgatan 22
164 40 Kista
+46 (0) 8 584 233 24
info@amtico.se

Amtico International Asia

Unit 1907, 19th Floor
Paul Y. Centre
51 Hung To Road, Kwun Tong
Kowloon, Hong Kong
+852 2327 7703
samples@amtico.com

**Amtico International
Middle East, Africa & India**

8th Floor
Building Number 2
J&G DMCC, Dubai, UAE
+971 (0) 50 192 33 46
samples@amtico.com

amtico.com

Visit amtico.com for more information on our product range, inspiring ideas, maintenance and installation advice. Every effort is made to achieve accurate reproduction of products in this brochure, however printing limitations can be misleading. Selection of products should be made from actual samples. Samples are small pieces cut from standard tiles. They give only a general indication of the design. Tone and shading can vary slightly from batch to batch and it is not possible to guarantee that the sample will exactly match the material supplied. The policy of the Company is one of continuous development and improvement and the right is reserved to add or delete from the range or change patterns without prior notification. All metric sizes are rounded. All products are manufactured in line with EN649, EN ISO 10582 and EN1307. Brochure correct at the time of printing.

amtico
makes it
possible

amtico
A MANNINGTON COMPANY