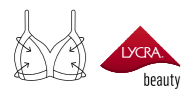


A woman with reddish-brown hair and freckles is posing in a vibrant green, two-piece bikini. She is leaning back with her right arm raised and resting on her hip. The background is a solid, light blue color. The text 'NATURANA HERITAGE' is overlaid in white, bold, sans-serif font across the lower half of the image.

# NATURANA HERITAGE

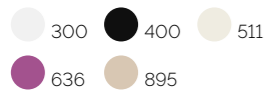
SPRING/SUMMER  
2024

# MINIMIZER



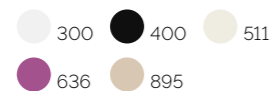
**5363**  
**Soft-BH, vorgeformt / Minimizer**  
 Moulded soft bra / Minimiser  
 B-D 75-100 | B-D 34-44  
 E 75-95 | DD 34-42

Hauptstoff | Main fabric:  
 93% PA, 7% EL



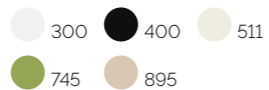
**0063**  
**Miederslip**  
 Panty girdle  
 70-90 | M-3XL

Hauptstoff | Main fabric:  
 85% PA, 15% EL  
 Einsatz | Insert: 93% PA, 7% EL  
 Futter | Lining: 100% CO



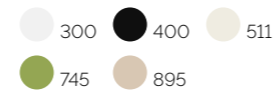
**5063**  
**Soft-BH, vorgeformt / Minimizer**  
 Moulded soft bra / Minimiser  
 B-E 75-105 | B-DD 34-46  
 F-G 75-95 | E-F 34-42

Hauptstoff | Main fabric:  
 93% PA, 7% EL

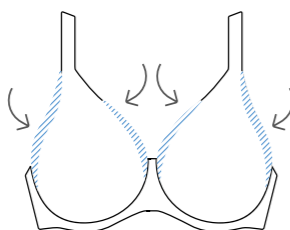


**0163**  
**Miederslip**  
 Panty girdle  
 65-90 | S-3XL

Hauptstoff | Main fabric:  
 90% PA, 10% EL  
 Einsatz | Insert: 93% PA, 7% EL



# MINIMIZER



## MINIMIZER & SIDE-SMOOTHER

Hohe Seitenteile verstecken Pölsterchen  
High side wings eliminate bulges

Reduziert den Cup optisch  
Reduces the appearance of your bust

## MINIMIZER

Spezielle Schnittführung reduziert den Cup optisch um bis zu einer Größe

Designed to reduce the appearance of your bust by up to one cup size

Mit Bügel für optimalen Sitz  
Underwired for optimum fit

Kein Aufsitzen der Oberbekleidung  
Minimal friction under your upper layers



Made with Organic Materials  
Certified by Control Union  
CU 834149

**5332**  
**Soft-BH, Sidesmoothen, Entlastungsträger**  
Soft bra, sidesmoothen, relief straps  
B-D 80-105 | B-D 36-46

Hauptstoff | Main fabric:  
90% CO, 10% EL

300 400 895

**7208**  
**Bügel-BH, vorgeformt, Minimizer, Simplex**  
Underwired bra, Minimizer, Simplex  
B-D 75-95 | B-D 34-42  
E 75-90 | DD 34-40  
F 75-85 | E 34-38

Hauptstoff | Main fabric: 100% PES  
Rückenteil | Back part: 81% PA, 19% EL  
Futter | Lining: 100% PA

300 400



# BODY SHAPING



**3004**  
**Body Classic**  
Body Classic  
B-D 80-105 | B-D 36-46

Hauptstoff | Main fabric:  
76% PA, 24% EL  
Einsatz | Insert: 85% PA, 15% EL  
Futter | Lining: 87% PA, 13% EL

300 400

**5504**  
**Soft-BH, vorgeformt**  
Moulded soft bra  
B-F 70-105 | B-E 32-46

Hauptstoff | Main fabric:  
76% PA, 24% EL  
Einsatz | Insert: 85% PA, 15% EL  
Futter | Lining: 87% PA, 13% EL

300 400



**3227**  
**Body**  
Body  
B-D 75-95 | B-D 34-42

Hauptstoff | Main fabric:  
81% PA, 19% EL  
Einsatz | Insert: 92% PA, 8% EL

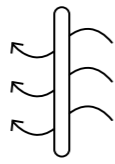
300 895

**5227**  
**Soft-BH, vorgeformt**  
Moulded soft bra  
B-D 75-95 | B-D 34-42

Hauptstoff | Main fabric:  
81% PA, 19% EL  
Einsatz | Insert: 92% PA, 8% EL

300 895

# UNDERWIRED BRAS



## AIR MAGIC SPACER

Spacer Schale aus  
speziellem Abstandsgewirke  
Spacer Cups  
made of innovative fabric  
**Extrem leicht und atmungsaktiv**  
Extremely light and breathable  
**Formstabil**  
Retains its shape



**7152**  
**Bügel-BH Spacer**  
Padded underwired Spacer bra  
B-E 75-90 | B-DD 34-40  
F 75-85 | E 34-38

Hauptstoff | Main fabric:  
85% PA, 15% EL  
Cup | Cup: 95% PES, 5% EL

● 300 ● 400

**87543**  
**Bügel-BH, genäht**  
Underwired bra  
B-E 75-105 | B-DD 34-46

Hauptstoff | Main fabric:  
96% PA, 4% EL  
Stickerei Stoff |  
Embroidery fabric: 100% PA  
Stickerei Faden |  
Embroidery thread: 100% PES  
Futter | Lining: 100% PA

● 300 ● 400 ● 511

● 895



## COMFORT STRAPS



**5336**  
**Soft-BH, genäht**  
 Soft bra  
 B-D 75-105 | B-D 34-46

Hauptstoff | Main fabric:  
 81% PA, 19% EL  
 Einsatz | Insert: 90% PA, 10% EL  
 Futter Einsatz | Insert lining:  
 81% PA, 19% EL

● 300 ● 400

**7736**  
**Bügel-BH, genäht**  
 Underwired bra  
 B-D 80-105 | B-D 36-46

Hauptstoff | Main fabric:  
 81% PA, 19% EL  
 Einsatz | Insert: 90% PA, 10% EL  
 Futter Einsatz | Insert lining:  
 81% PA, 19% EL

● 300 ● 400



**5319**  
**Soft-BH, genäht, Entlastungsträger**  
 Soft bra, comfort straps  
 B-D 80-100 | B-D 36-44

Hauptstoff | Main fabric:  
 45% PA, 43% PES, 12% EL  
 Vorderteil Futter | Front part lining:  
 100% CO

● 300 ● 400



## COMFORT STRAPS



**86136**  
**Funktioneller Soft-BH**  
 Firm support soft bra  
 B-E 80-135 | B-DD 36-58

Hauptstoff | Main fabric:  
 88% PES, 12% CO

● 300 ● 895

**5157**  
**Soft-BH, genäht | Soft bra**  
 B-D 80-105 | B-D 36-46

Stickerei Stoff |  
 Embroidery fabric: 100% PES  
 Stickerei Faden |  
 Embroidery thread: 100% PES  
 Rückenteil | Backpart: 100% PES  
 Cup Futter | Cup lining: 100% CO

● 300 ● 251

# ATHLEISURE



## ATHLEISURE

FÜR SPORT- UND FREIZEIT  
FOR SPORTS AND LEISURE

Keine störenden Nähte im Cup  
Seam free cups

Seitliche Bruststütze für  
optimalen Halt  
With side sling for optimum  
support

Weiche, gepolsterte  
Entlastungsträger  
Soft and wide padded straps



**5127**  
**Soft-BH mit gepolsterten Trägern,  
doppelt vorgeformt**  
Double moulded soft bra with  
padded straps  
A, B 75-100 | A, B 34-44  
C 75-95 | C 34-42  
D 75-90 | D 34-40

Hauptstoff | Main fabric:  
90% CO, 10% EL

300 895



**5021**  
**Soft-BH, vorgeformt**  
Moulded soft bra  
B-D 75-95 | B-D 34-42

Hauptstoff | Main fabric:  
84% PA, 16% EL  
Einsatz | Insert: 80% PA, 20% EL

300 400



**86021**  
**Soft-BH, vorgeformt**  
Moulded soft bra  
B-D 80-105 | B-D 36-46

Hauptstoff | Main fabric:  
95% CO, 5% EL

300 400 643



**4121**  
**Panty | Panty**  
36-46 | XS-2XL

Hauptstoff | Main fabric:  
95% CO, 5% EL

643



# COTTON



**86545**  
Soft-BH, genäht  
Soft bra  
A-E 75-100 | A-DD 34-44

Hauptstoff | Main fabric: 100% CO

300 400 895



**5144**  
Soft-BH, vorgeformt  
Moulded soft bra  
B-D 75-105 | B-D 34-46

Hauptstoff | Main fabric:  
95% CO, 5% EL  
Spitze | Lace: 81% PA, 19% EL

300 895



**5101**  
Soft-BH, vorgeformt  
Moulded soft bra  
B-D 75-95 | B-D 34-42

Hauptstoff | Main fabric:  
87% CO, 13% EL

300 895



**5217**  
Soft-BH, genäht  
Soft bra  
B-E 75-100 | B-DD 34-44

Hauptstoff | Main fabric:  
63% CO, 31% PES, 6% EL  
Cup Futter | Cup lining: 100% CO

300 895

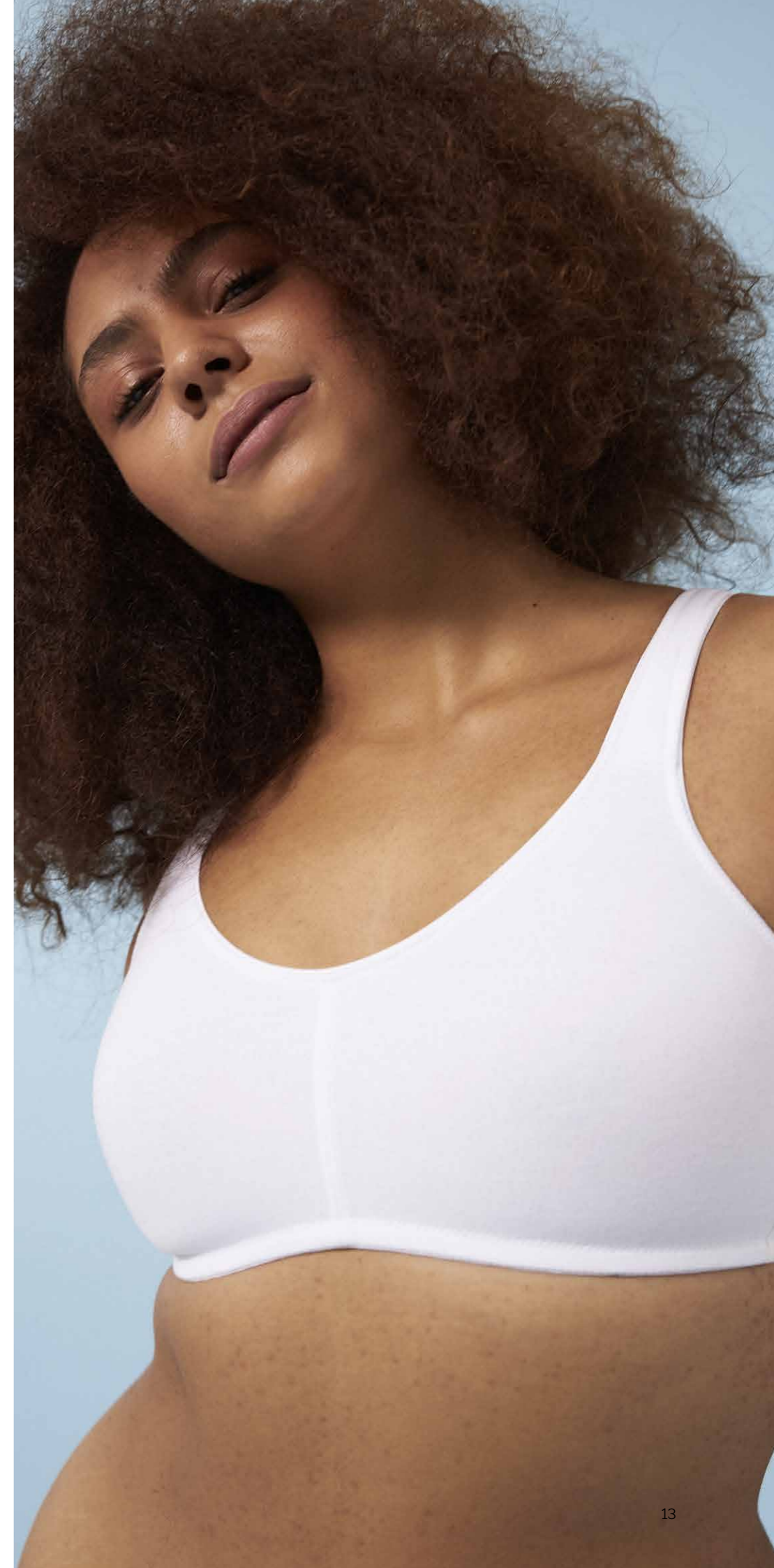


Organic  
Certified by Control Union  
CU 834149

**5245**  
Soft-BH vorgeformt,  
Entlastungsträger  
Moulded soft bra, comfort straps  
B-D 80-105 | B-D 36-46

Hauptstoff | Main fabric:  
95% CO, 5% EL

300 267 895



## STAR VON NATURANA



**5337**  
Soft-BH, vorgeformt  
Moulded soft bra  
A-D 75-100 | B-DD 34-44

Vorderteil | Front part: 100% PES  
Einsatz | Insert: 69% PA, 31% EL  
Rückenteil | Back part:  
85% PA, 15% EL

● 300 ● 400

**5220**  
Star von Naturana –  
Soft-BH, vorgeformt mit Kreuz-  
blende  
Star by Naturana –  
Moulded crossover soft bra  
A 70-90 | A 32-40  
B-C 70-95 | B-C 32-42  
D 75-90 | D 34-40

Hauptstoff | Main fabric: 100% CO

● 300



## VINTAGE COTTON



**5346**  
Soft-BH, genäht | Soft bra  
C-E 75-105 | C-DD 34-46

Vorderteil | Frontpart: 100% CO  
Spitze | Lace: 91% PA, 9% EL  
Rückenteil | Back part:  
95% CO, 5% EL

● 300 ● 895



**86278**  
Soft-BH, genäht | Soft bra  
A-D 75-100 | A-D 34-44

Hauptstoff | Main fabric:  
95% CO, 5% EL  
Spitze | Lace: 100% PA  
Cup Futter | Cup lining: 100% CO

● 300 ● 840

## ALL - TIME FAVOURITES



**5046**  
Soft-BH, genäht  
Soft bra

B-E 75-105 | B-DD 34-46  
F-G 75-100 | E-F 34-44

Vorderteil | Front part: 100% PA  
Spitze | Lace: 90% PA, 10% EL  
Rückenteil | Back part:  
82% PA, 18% EL

● 300 ● 400 ● 895

**5467**  
Funktioneller Soft-BH, gepaddet  
Firm control padded soft bra  
A 75-100 | A 34-44  
B-C 75-95 | B-C 34-42

Hauptstoff | Main fabric:  
85% PA, 15% EL  
Stickerei Stoff | Embroidery fabric:  
100% PA  
Stickerei Faden | Embroidery  
thread: 82% CV, 18% PES  
Cup Futter | Cup lining: 100% CO

● 300





**5139**  
**Soft-BH mit starker Funktion**  
 Firm control soft bra  
 B-E 80-105 | B-DD 36-46  
 Cup | Cup: 100% PA  
 Spitze | Lace: 91% PA, 9% EL  
 Rückenteil | Back part: 89% PA, 11% EL  
 Cup Futter | Cup lining: 100% PA

● 300 ● 895

**3033**  
**Korsett, wirkungsvoll verstärkt, Brustunterteil mit Fibrefill gestützt**  
 Corsette with reinforcements and undercup support  
 B-D 80-105 | B-D 36-46  
 Hauptstoff | Main fabric: 85% PA, 15% EL  
 Cup | Cup: 100% PA  
 Futter | Lining: 87% PA, 13% EL  
 Cup Futter oben | Upper cup lining: 100% PA  
 Cup Futter unten | Lower cup lining: 100% PA

● 300 ● 840

**3011**  
**Korsett, voll gefüttert, Brustunterteil gestützt, durch Hakenband gesicherter Reißverschluss**  
 Fully lined corselette with undercup support, front zip with hook and eye fastening  
 B-D 80-120 | B-D 36-52

Hauptstoff | Main fabric: 85% PA, 15% EL  
 Spitze | Lace: 100% PA  
 Futter | Lining: 87% PA, 13% EL  
 Cup Futter oben | Upper cup lining: 100% PA  
 Cup Futter unten | Lower cup lining: 100% PA  
 Futter Einsatz | Insert lining: 100% PA

● 840



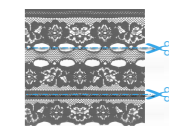
**0184**  
**Miederhose**  
 Firm control panty girdle  
 75-100 | L-5XL  
 Hauptstoff | Main fabric: 83% PA, 17% EL

● 300 ● 400 ● 840



**0029**  
**Verstärkte Miederhose**  
 Reinforced panty girdle  
 75-100 | L-5XL  
 Hauptstoff | Main fabric: 85% PA, 15% EL  
 Futter | Lining: 87% PA, 13% EL

● 300 ● 840



Individuell anpassbar  
 Individually adjustable

**3611**  
**Unterrock**  
 Underskirt  
 36-52 | XS-5XL  
 Länge ca. 50 cm | Length ca. 50 cm  
 Hauptstoff | Main fabric: 100% PES

● 400 ● 895

**3609**  
**Unterrock**  
 Underskirt  
 38-50 | S-4XL  
 Länge ca. 55 cm | Length ca. 55 cm  
 Hauptstoff | Main fabric: 100% PA  
 Spitze | Lace: 100% PA

● 300 ● 400

# ACCESSORIES



3er Pack | 3-pack: 809910 | 809911 | 809912

**Rückenverlängerungen**  
Bra extenders

100% PA

● 300 ● 400 ● 895



0004

**Wäschesack**

Schützt empfindliche Wäsche vor Beschädigungen  
Einheit 1 Pack - 25 Stück

**Lingerie Laundry Bag**

protects delicate garments  
1 package - 25 pieces

Hauptstoff | Main fabric: 100% PA

● 300



9922

**Brustwarzenabdeckung**

innen Polyurethan, außen PES

**Foam Nipple Covers**

inside Polyurethane, outside PES

● 840

## ICONS LEGENDE/LEGEND



**Invisible**

Nahtlos gebondete Kanten  
Seamless bonded edges



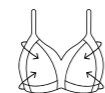
**Air Magic Spacer**

Extrem leicht und atmungsaktive Schale  
Extremely light and breathable spacer cup



**Sidesmoother**

Hohe Seitenteile verstecken Pölsterchen  
High side wings eliminate bulges



**Minimizer & Sidesmoother**

Reduziert den Cup optisch  
Reduces the appearance of your bust  
Hohe Seitenteile verstecken Pölsterchen  
High side wings eliminate bulges



**Elasticcup**

Universelle Cup Größe  
Universal cup size



**Maternity**

Mastectomie-BH mit herausnehmbaren Pads  
Mastectomy bra with removable pads



**Pocketed**

Mastectomie-BH mit herausnehmbaren Pads  
Mastectomy bra with removable pads



**Shaping**



**Baumwolle Cotton**



**Made from plants origin fabrics made from cellulose**



**Made from Recycled materials**



**Athleisure**

Für Sport- und Freizeit  
For sports and leisure

## KOOPERATIONEN | PARTNERSHIPS



# CONTENTS

	Art.	Page	Art.	Page	Art.	Page
● 251 Dark blue						
● 267 Matcha sorbet	0029	17	5101	12	5363	2
● 300 White	0063	2	5127	10	5467	15
● 400 Black	0163	2	5139	16	5504	5
● 511 Champagner	0184	16	5144	12	7152	6
● 636 Purple orchid	3004	5	5157	9	7208	4
● 643 Smoked orchid	3011	16	5217	12	7328	6
● 745 Moss	3033	16	5220	14	7736	8
● 840 Puder   Beige	3227	5	5227	5	86021	10
● 895 Light Beige	3609	17	5245	13	86136	9
	3611	17	5319	8	86278	15
	4121	10	5332	4	86545	12
	5021	10	5336	8	87543	6
	5046	15	5337	14		
	5063	2	5346	15		

## GRÖSSEN-UMRECHNUNGSTABELLE FÜR WÄSCHEGRÖSSEN CONVERSION TABLE FOR UNDERWEAR SIZES

Für BHs und elastische Korsetts | For bras and elastic corselets

**Unterbrustumumfang | Underbust**

Unterbrustumumfang in cm Underbust in cm	58-62	63-67	68-72	73-77	78-82	83-87	88-92	93-97	98-102	103-107	108-112	113-117	118-122	123-127
EU	60	65	70	75	80	85	90	95	100	105	110	115	120	125
F	75	80	85	90	95	100	105	110	115	120	125	130	135	140
GB	28	30	32	34	36	38	40	42	44	46	48	50	52	54

**Brustumfang/Cupgröße | Chest width/Cup sizes**

EU	GB	Brustumfang in cm   Chest width in cm													
AA	AA	70-72	75-77	80-82	85-87	90-92									
A	A	72-74	77-79	82-84	87-89	92-94	97-99	102-104	107-109	112-114	117-119	122-124	127-129	132-134	137-139
B	B	74-76	79-81	84-86	89-91	94-96	99-101	104-106	109-111	114-116	119-121	124-126	129-131	134-136	139-141
C	C	76-78	81-83	86-88	91-93	96-98	101-103	106-108	111-113	116-118	121-123	126-128	131-133	136-138	141-143
D	D	78-80	83-85	88-90	93-95	98-100	103-105	108-110	113-115	118-120	123-125	128-130	133-135	138-140	143-145
E	DD	80-82	85-87	90-92	95-97	100-102	105-107	110-112	115-117	120-122	125-127	130-132	135-137	140-142	145-147
F	E	82-84	87-89	92-94	97-99	102-104	107-109	112-114	117-119	122-124	127-129	132-134	137-139	142-144	147-149
G	F	84-86	89-91	94-96	99-101	104-106	109-111	114-116	119-121	124-126	129-131	134-136	139-141	144-146	149-151
H	G	86-88	91-93	96-98	101-103	106-108	111-113	116-118	121-123	126-128	131-133	136-138	141-143	146-148	151-153
I	H	88-90	93-95	98-100	103-105	108-110	113-115	118-120	123-125	128-130	133-135	138-140	143-145	148-150	153-155

Für Miederhosen, Slips und Loungewear | For panty girdles, briefs and loungewear

**Taillenumfang | Waist circumference**

Taillenumfang in cm Waist circumference	53-57	58-62	63-67	68-72	73-77	78-82	83-87	88-92	93-97	98-102	103-107	108-112	113-117
Miederhosen Panty girdles				65	70	75	80	85	90	95	100	105	110
EU	32	34	36	38	40	42	44	46	48	50	52	54	56
F	34	36	38	40	42	44	46	48	50	52	54	56	58
GB	6	8/XXS	10/XS	12/S	14/M	16/L	18/XL	20/XXL	22/3XL	24/4XL	26/5XL	28/6XL	30/7XL

Änderungen vorbehalten | Subject to change

# NATURANA



**NATURANA Dölker GmbH & Co Kommanditgesellschaft**  
Hinterweilerstraße 3 | 72810 Gomaringen | Tel. +49 7072 12-0 | info@naturana.de

[naturana.com](http://naturana.com)

